

GEORGE MUNICIPALITY



BID DOCUMENT NUMBER: COM 006/2016

TENDER FOR THE APPOINTMENT OF A CONTRACTOR FOR THE BUILDING OF PUBLIC TOILETS AT VAN DER STEL SQUARE

ENQUIRIES: Mr Wessel Robertson YORK STREET GEORGE (044) 802 2900		ISSUED BY: THE CITY COUNCIL MUNICIPALITY OF GEORGE P O BOX 19 GEORGE, 6530	
SUMMARY FOR TENDER OPENING PURPOSES			
NAME OF TENDERER:			
SUPPLIER DATABASE NO.:			
TOTAL PRICE (INCLUDING VAT)		R	
PREFERENCES CLAIMED FOR:			
B-BBEE Status Level of Contributor:			
Preference Points Claimed:			
B-BBEE certificates submitted with the tender document <u>MUST</u> be VALID ORIGINAL B-BBEE CERTIFICATES or VALID CERTIFIED COPIES OF THE B-BBEE CERTIFICATES			
TENDER CLOSES AT 12h00 ON FRIDAY, 08 APRIL 2016			

TENDERER CONTACT DETAILS

This information shall be used for any correspondence or contact with the tenderer.

Please indicate whether you want to receive any correspondence via e-mail or send to your postal address by registered mail.

Name of Bidding Company:		Mark choice of correspondence with X
Postal Address: Postal Code:	
E-mail Address:	
Telephone Number:	
Cellular Number:	
Facsimile Number:	

GEORGE MUNICIPALITY

DEPARTMENT: COMMUNITY SERVICES

CONTRACT NUMBER COM 006/2016

**APPOINTMENT OF A CONTRACTOR FOR THE BUILDING OF PUBLIC
TOILETS AT VAN DER STEL SQUARE**

GENERAL TENDER INFORMATION

TENDER ADVERTISED : 10 MARCH 2016

COMPULSORY BID BRIEFING SESSION : 18 MARCH 2016 AT 11:00

VENUE FOR BID BRIEFING SESSION : COMMITTEE ROOM,
COMMUNITY SERVICES,
82 MEADE STREET,
GEORGE

CLOSING DATE : 08 APRIL 2016

CLOSING TIME : 12H00

LOCATION OF TENDER BOX : **Tender Box** at the George
Municipality, on the First
Floor, Department: Financial
Services, Supply Chain
Management Unit, Civic
Centre, York Street, George.

GEORGE MUNICIPALITY
DEPARTMENT: COMMUNITY SERVICES
CONTRACT NUMBER COM 006/2016
APPOINTMENT OF A CONTRACTOR FOR THE BUILDING OF PUBLIC
TOILETS AT VAN DER STEL SQUARE

CONTENTS		Pg No.
PART T	The Tender	5
PART T1	Tender Procedures	5
T1.1	Tender Notice and Invitation to Tender	6-7
T1.2	Tender Data	8-33
PART T2	Returnable Documents (All documents / schedules are returnable)	34
T2.1	List of Returnable Schedules Required for Tender Evaluation	35
T2.1	Returnable Schedules	36-45
T2.2	Other documents required for tender evaluation purposes	46-48
T2.2	Returnable Schedules that will be incorporated in the contract	49-52
PART C	The Contract	53
PART C1	Agreement and Contract Data	54
C1.1	Form of Offer and Acceptance	55-57
C1.2	Contract Data	58-59
C1.3	Objections and Complainants form	60-61
C1.4	Form of Professional Indemnity Insurance / Form of Guarantee	62
PART C2	Pricing Data	63
C2.1	Pricing Instructions	64
C2.2	Schedule of Activities	65
PART C3	Scope of Work	66
C3.1	Scope of Work	66
C3.2	Pricing Schedule	68
PART C4	Special Conditions of Tender According to the George Municipal PPPFA Policy	73
PART C5	Site Information	75
PART C6	HEALTH AND SAFETY SPECIFICATION	76
PART C7	Annexures: Drawings	77

GEORGE MUNICIPALITY

DEPARTMENT: COMMUNITY SERVICES

CONTRACT NUMBER COM 006/2016

**APPOINTMENT OF A CONTRACTOR FOR THE BUILDING OF PUBLIC
TOILETS AT VAN DER STEL SQUARE**

The Tender (Part T)

PART T1 Tender Procedures

- T1.1 Tender Notice and Invitation to Tender
- T1.2 Tender Data

PART T2 Returnable Documents (All documents / schedules are returnable)

- T2.1 List of Returnable Schedules Required for Tender Evaluation
- T2.1 Returnable Schedules
- T2.2 Other documents that will be incorporated into the contract
- T2.4 Returnable Schedules that will be incorporated in the contract

GEORGE MUNICIPALITY

DEPARTMENT: COMMUNITY SERVICES

CONTRACT NUMBER COM 006/2016

APPOINTMENT OF A CONTRACTOR FOR THE BUILDING OF PUBLIC TOILETS AT VAN DER STEL SQUARE

Tender Notice and Invitation to Tender (T1.1)

<p>Tenders word hiermee ingewag vir die:</p> <p><u>AANSTEL VAN N KONTRAKTEUR VIR DIE BOU VAN PUBLIEKE TOILETTE BY VAN DER STEL PLEIN.</u></p> <p>Voltooide tenders in 'n verseëelde koevert, duidelik gemerk:</p> <p>Tender Nr: COM 006 OF 2016 moet voor 08 April 2016 om 12:00 in die tender bus by die George Munisipaliteit, Eerste Vloer, Departement: Finansiële Dienste, Voorsieningskanaaleenheid, Burgesentrum, Yorkstraat, George geplaas word. Tenders sal om 12:05 dieselfde dag in die Komiteekamer oopgemaak word. Laat of ongemerkte tenders sal nie oorweeg word nie. Geen tenders per pos, faks of e-pos sal aanvaar word nie.</p> <p>'n Verpligte inligtingsessie sal op 18 Maart 2016 om 11:00 in die Komitee Kamer van die Departement: Gemeenskapsdienste, Meade Straat 82, George gehou word</p> <p>Indien die verpligte inligtingsessie nie bygewoon word nie, sal u tender nie geldig wees nie.</p> <p>Tender dokumente sal verkrygbaar wees teen 'n R173-00 nie-terugbetaalbare deposito by die Voorsieningskanaal Bestuurseenheid, Eerste Vloer, Burgesentrum, Yorkstraat, George.</p> <p>Tenderaars moet by die CIDB geregistreer wees en 'n graderingsvlak van 2GB of hoër hê.</p> <p>Tender dokumente is gratis op die George Munisipaliteit se webblad beskikbaar: www.george.org.za</p>	<p>Tenders are hereby invited for the:</p> <p><u>APPOINTMENT OF A CONTRACTOR FOR THE BUILDING OF PUBLIC TOILETS AT VAN DER STEL SQUARE.</u></p> <p>Completed tenders in a sealed envelope, clearly marked:</p> <p>Tender No: COM 006 OF 2016 must be placed in the tender box at the George Municipality on the First Floor, Department: Financial Services, Supply Chain Management Unit, Civic Centre, York Street, George by no later than 12:00 on 08 April 2016. Tenders will be opened on the same day in the Committee Room at 12:05. Late or unmarked tenders will not be considered. No posted tenders or tenders per fax or e-mail will be accepted.</p> <p>A compulsory briefing session will be held on 18 March 2016 at 11:00 in the Committee Room of the Department of Community Services 82 Meade Street, George.</p> <p>Non-attendance of the compulsory briefing session will invalidate your tender.</p> <p>Tender documents will be available at a non-refundable deposit of R173-00 each from the Supply Chain Management Unit, First Floor, Civic Centre, York Street, George.</p> <p>Tenderers must be registered with the CIDB and should have a grading designation of 2GB or higher.</p> <p>Tender documents are available on the George Municipality's website: www.george.org.za, free of charge</p>	<p>Iziniki maxabiso ziyamenywa malunga:</p> <p><u>UKUQESHWA KWEKONTRAKTA MALUNGA NOKWAKHIWA KWEZINDLU ZANGASESE ZIKAWONKE-WONKE EVAN DER STEL PLEIN.</u></p> <p>Iziniki maxabiso ezigqityiweyo kwimvulophu evaliweyo, ephawulwe ngokucacileyo:</p> <p>Isiniki maxabiso No: COM 006 SIKA-2016 kufuneka sibekwe kwibhokisi yesiniki-maxabiso kwaMasipala waseGeorge kuMgangatho Wokuqala Ubongameli: linkonzo Zemali, uLawulo LweNtengiso, York Street, eGeorge kungadlulanga intsimbi ye- 12:00 ngomhla wesi-08 kuTshazimpunzi 2016. Iziniki maxabiso ziya kuvulwa kwangalemini inye kwiGumbi leKomiti ngo- 12:05. Iziniki maxabiso ezifike emva kwexesha okanye ezingaphawulwanga azisayi kunanzwa. Akukho ziniki maxabiso ziposiweyo, okanye ziniki maxabiso ngeposi okanye ziniki maxabiso ngefeksi okanye ze-imeyili ziya kwamkelwa.</p> <p>Isheshini yokucebisa enyanzelekileyo iya kubanjwa ngomhla we-18 eyoKwindla 2016 kwiGumbi leKomiti leSebe leeNkonzo zoLuNtu, 82 Meade Street, eGeorge.</p> <p>Ukungayizimasi iseshini yokucebisa enyanzelekileyo kuya kusiphuthisa isiniki maxabiso sakho</p> <p>Amaxwebhu eziniki maxabiso aya kufumaneka ngedipozithi engabuyiswayo ye-R173-00 lilinye kwiCandelo loLawulo lweNtengiso, Umgangatho wokuqala, Kwiziko loLuNtu, York Street, eGeorge.</p> <p>Abaniki maxabiso kumele babhaliswe kunye beCIDB kwaye kumele babe nomgangatho wegama we-2GB okanye ngaphezulu.</p> <p>Amaxwebhu eziniki maxabiso ayafumaneka</p>
---------------------------------------------------------------------------------------------------------------------------------------------------------------------------------------------------------------------------------------------------------------------------------------------------------------------------------------------------------------------------------------------------------------------------------------------------------------------------------------------------------------------------------------------------------------------------------------------------------------------------------------------------------------------------------------------------------------------------------------------------------------------------------------------------------------------------------------------------------------------------------------------------------------------------------------------------------------------------------------------------------------------------------------------------------------------------------------------------------------------------------------------------------------------------------------------------------------------------------------------------------------------------------------------------------------------------------------------------------------------------------------------------------	--------------------------------------------------------------------------------------------------------------------------------------------------------------------------------------------------------------------------------------------------------------------------------------------------------------------------------------------------------------------------------------------------------------------------------------------------------------------------------------------------------------------------------------------------------------------------------------------------------------------------------------------------------------------------------------------------------------------------------------------------------------------------------------------------------------------------------------------------------------------------------------------------------------------------------------------------------------------------------------------------------------------------------------------------------------------------------------------------------------------------------------------------------------------------------------------------------------------------------------------------------------------------------------------------------------------------------------------------------------------------------------------------------------------------	-----------------------------------------------------------------------------------------------------------------------------------------------------------------------------------------------------------------------------------------------------------------------------------------------------------------------------------------------------------------------------------------------------------------------------------------------------------------------------------------------------------------------------------------------------------------------------------------------------------------------------------------------------------------------------------------------------------------------------------------------------------------------------------------------------------------------------------------------------------------------------------------------------------------------------------------------------------------------------------------------------------------------------------------------------------------------------------------------------------------------------------------------------------------------------------------------------------------------------------------------------------------------------------------------------------------------------------------------------------------------------------------------------------------------------------------------------------------------------------------------------------------------

The Tender Notice and Invitation to Tender

Part T1.1

<p>Tenders sal ge-evalueer en toegeken word in terme van die Wet op die Raamwerk vir Voorkeurverkrygingsbeleid (Wet 5 van 2000), Regulasie 2011 asook George Munisipaliteit se Voorsieningskanaal-bestuursbeleid, waar 80 punte ten opsigte van die prys en 20 punte ten opsigte van B-BBEE status, toegeken sal word.</p> <p>Vir meer inligting, kontak Mr Wessel Robertson by (044) 802 2900.</p> <p>Die Munisipaliteit behou hom die reg voor om enige versoek vir 'n tender terug te trek en/of te her-adverteer of enige tender te verwerp of gedeeltelik te aanvaar. Die Munisipaliteit is nie daartoe verbind om die laagste of enige tender te aanvaar nie.</p> <p>Dit sal van alle suksesvolle tenderaars verwag word om op die Wes-Kaapse Verskaffersdatabasis (WKVD) te registreer</p> <p>T BOTHA MUNISIPALE BESTUURDER GEORGE MUNISIPALITEIT GEORGE 6530</p>	<p>Tenders will be evaluated and adjudicated in terms of the Preferential Procurement Policy Framework Act (Act 5 of 2000) , Regulations 2011 and the George Municipality's Supply Chain Management Policy, where 80 points will be allocated in respect of price and 20 points for B-BBEE status.</p> <p>For more information, contact Mnr Wessel Robertson at (044) 802 2900.</p> <p>The Municipality reserves the right to withdraw any invitation to tender and/or to readvertise or to reject any tender or to accept a part of it. The Municipality is not bound to accept the lowest or any tender.</p> <p>It will be required from all successful tenderers to register on the Western Cape Supplier Database (WCSD).</p> <p>T BOTHA MUNICIPAL MANAGER GEORGE MUNICIPALITY GEORGE 6530</p>	<p>kwabwehusayithi kaMasipala waseGeorge: : www.george.org.za simahla.</p> <p>Iziniki maxabiso ziyakuhlolwa kwaye zigwetywe ngokwesigqibo soMthetho omiselweyo obizwa ngokuba yiPreferential Procurement Policy Framework Act (Umthetho omiselweyo wesi- 5 ka- 2000) Imimiselo ka-2011 kunye noMgaqo-nkqubo woLawulo lweNtengiso kaMasipala waseGeorge, apho amanqaku angama- 80 aya kwabiwa malunga nexabiso kunye nangama-20 amanqaku malunga newonga leB-BBEE.</p> <p>Malunga nolwazi oluthe vetshe, dibana noMnu. Wessel Robertson kwa- (044) 802 2900.</p> <p>Umasipala ugcina ilungelo lokurhoxisa nasiphina isimemo sokunika ixabiso kunye okanye lokwazisa kwakhona okanye lokwala nasiphina isiniki maxabiso okanye inxenye yaso. Umasipala akazibopheleli ekwamkeleni isiniki maxabiso esisesona siphantsi okanye nasiphina isiniki maxabiso.</p> <p>Kuya kuba yimfuneko kubo bonke abaniki maxabiso abaphumeleleyo ukuba babhaliswe kuluhlu lwaBaxhobisi lwaseNtshona Koloni ekugcinwa kulo iindawo ezaziwa ngento (WCSD).</p> <p>T BOTHA UMPHATHI KAMASIPALA UMASIPALA WASEGEORGE GEORGE 6530</p>
--------------------------------------------------------------------------------------------------------------------------------------------------------------------------------------------------------------------------------------------------------------------------------------------------------------------------------------------------------------------------------------------------------------------------------------------------------------------------------------------------------------------------------------------------------------------------------------------------------------------------------------------------------------------------------------------------------------------------------------------------------------------------------------------------------------------------------------------------------------------------------------------------------	----------------------------------------------------------------------------------------------------------------------------------------------------------------------------------------------------------------------------------------------------------------------------------------------------------------------------------------------------------------------------------------------------------------------------------------------------------------------------------------------------------------------------------------------------------------------------------------------------------------------------------------------------------------------------------------------------------------------------------------------------------------------------------------------------------------------------------	------------------------------------------------------------------------------------------------------------------------------------------------------------------------------------------------------------------------------------------------------------------------------------------------------------------------------------------------------------------------------------------------------------------------------------------------------------------------------------------------------------------------------------------------------------------------------------------------------------------------------------------------------------------------------------------------------------------------------------------------------------------------------------------------------------------------------------------------------------------------------------------------------------------------------------------------------------------------------------------------------------------------------------------------------------------------------------------------------------------------------------------------------------------------------------

GEORGE MUNICIPALITY

DEPARTMENT: COMMUNITY SERVICES

CONTRACT NUMBER COM 006/2016

APPOINTMENT OF A CONTRACTOR FOR THE BUILDING OF PUBLIC
TOILETS AT VAN DER STEL SQUARE

Tender Data (T1.2)

Clause number	The conditions of Tender are the Standard Conditions of Tender as contained in Annexure F of Board Notice 136 of 2015 in Government Gazette No. 38960 of 10 July 2015, Construction Industry Development Board (CIDB) Standard for Uniformity in Construction Procurement. (See www.cidb.org.za). The Standard Conditions of Tender for Procurements make several references to the Tender Data for details that apply specifically to this Tender. The Tender Data shall have precedence in the interpretation of any ambiguity or inconsistency between it and the standard conditions of Tender. Each item of data given below is cross-referenced to the clause in the Standard Conditions of Tender to which it mainly applies.
F.1	General
	The Employer is the George Municipality, Department: Civil Engineering Services, P O Box 19, George, 6530.
F.1.2	Tender Documents
	<p>The Tender documents issued by the Employer comprise:</p> <p>The Tender</p> <p>Part T1: Tender Procedures</p> <p>T1.1 Tender notice and invitation to tender</p> <p>T1.2 Tender data</p> <p>Part T2 Returnable Documents</p> <p>T2.1 List of returnable documents</p> <p>T2.1 Returnable schedules</p> <p>T2.2 Other documents required for tender evaluation purposes</p> <p>T2.3. Returnable schedules that will be incorporated in the contract</p> <p>The Contract</p> <p>Part C1: Agreement and contract data</p> <p>C1.1 Form of offer and acceptance</p> <p>C1.2 Contract data</p> <p>C1.3 Objections and Complainants form</p> <p>C1.4 Form of Professional Indemnity Insurance / Form of Guarantee (Pro forma)</p> <p>Part C2: Pricing data</p> <p>C2.1 Pricing instructions</p> <p>C2.2 Pricing Schedule / Bill of Quantities / Activity Schedule</p> <p>Part C3: Scope of Works</p> <p>C3.1 Scope of works</p> <p>Part C4 Special Conditions of Tender According to the George Municipal PPPFA Policy</p> <p>Part C5 Site Information</p> <p>Part C6 Health and Safety Specification</p> <p>Part C7 Annexures: Drawings</p>
F.1.4	Communication and employer's agent:

	Name: Mr Wessel Robertson Address: 82 Meade Street Tel: (044) 802 2900 Fax: (044) 874 2186 E-mail: robertson@george.org.za			
F.2	Tenderer's obligations			
F.2.1	Eligibility			
F.2.1.1	Only tenderers who satisfy the following criteria are eligible to submit tenders: (a) Quality control practices and procedures which ensure compliance with stated employer's requirements. (b) Availability of resources. (c) Capacity to mobilize own and sub-contracting resources. (d) Availability of skills to manage and perform the contract (assigned personnel). (e) Quality achievements on previous contracts of a similar nature. (f) Previous work of a similar nature.			
F.2.1	Construction Industry Development Board (CIDB) Registration			
	Only those tenderers who are registered with the CIDB, or are capable of being so prior to the evaluation of submissions, in a contractor grading designation equal to or higher than a contractor grading designation determined in accordance with the sum tendered, or a value determined in accordance with Regulation 25(1B) or 25(7A) of the Construction Industry Development Regulations, for a 2GB class of construction work, are eligible to have their tenders evaluated. Joint Ventures are eligible to submit tenders provided that: (a) Every member of the Joint Venture is registered with the CIDB; (b) The lead partner has a contractor grading designation in the 2GB class of construction work; and (c) The combined contractor grading designation calculated in accordance with the Construction Industry Development Regulations is equal to or higher than a contractor grading designation determined in accordance with the sum tendered for a 2GB class of construction work of value determined in accordance with Regulation 25(1B) or 25(7A) of the Construction Industry Development Regulations.			
F.2.7	The arrangements for a compulsory clarification meeting are: <table border="1" style="width: 100%; border-collapse: collapse;"> <tr> <td style="width: 50%; padding: 5px;"> Date: Friday 18 March 2016 Starting time: 11H00 </td> <td style="width: 50%; padding: 5px;"> Location: Committee Room of the Department of Community Service, 82 Meade Street, George, 6530 </td> </tr> </table>		Date: Friday 18 March 2016 Starting time: 11H00	Location: Committee Room of the Department of Community Service, 82 Meade Street, George, 6530
Date: Friday 18 March 2016 Starting time: 11H00	Location: Committee Room of the Department of Community Service, 82 Meade Street, George, 6530			
F.2.12	No alternative Tender offer will be considered.			
F.2.13.1	Submit one tender offer only, either as a single tendering entity or as a member in a joint venture to provide the whole of the works, services or supply identified in the contract data and described in the scope of works, unless stated otherwise in the tender data.			
F.2.13.2	Return all returnable documents to the employer after completing them in their entirety in non-erasable black ink.			
F.2.13.3	Submit the parts of the tender offer communicated on paper as an original plus the number of copies stated in the tender data, with an English translation of any documentation in a language other than English, and the parts communicated electronically in the same format as they were issued by the employer.			

F.2.13.4	Sign the original and all copies of the tender offer where required in terms of the tender data. The employer will hold all authorized signatories liable on behalf of the tenderer. Signatories for tenderers proposing to contract as joint venture shall state which of the signatories is the lead partner whom the employer shall hold liable for the purpose of the tender offer.
F.2.13.5	Seal the original and each copy of the tender offer as separate packages marking the packages as “ORIGINAL” and “COPY”. Each package shall state on the outside the employer’s address and identification details stated in the tender data, as well as the tenderer’s name and contact address. <u>The Employer’s address for delivery of tender offers and identification details are:</u> George Municipality, First Floor, Department: Financial Services, Supply Chain Management Unit, Civic Centre, York Street, George (location of tender box). The identification details are: Tender number COM 006 OF 2016 .
F.2.13.6	A two-envelope system will not be followed.
F.2.13.8	Accept that the employer will not assume any responsibility for the misplacement or premature opening of the tender offer if the outer package is not sealed and marked as stated.
F.2.13.9	Accept that tender offers submitted by facsimile or e-mail will be rejected by the employer, unless stated otherwise in the tender data.
F.2.15	Closing time
F.2.15.1	Ensure that the employer received the tender offer at the address specified in the tender data not later than the closing time stated in the tender data. Accept that proof of posting shall not be accepted as proof of delivery. The closing time for submission of tender offers is at 12H00 on 08 April 2016 .
F.2.16	Tender offer validity
F.2.16.1	The Tender offer validity period is 120 days.
F.2.17	Clarification of tender after submission
	Provide clarification of a tender offer in response to a request to do so from the employer during the evaluation of tender offers. This may include providing a breakdown of rates or prices and correction of arithmetical errors by the adjustment of certain rates or item prices (or both). No change in the competitive position of tenderers or substance of the tender offer is sought, offered, or permitted.
F.2.18	Provide other material
F.2.18.1	Provide, on request by the employer, any other material that has a bearing on the tender offer, the tenderer’s commercial position (including notarized joint venture agreements), referencing arrangements, or samples of materials, considered necessary by the employer for the purpose of a full and fair risk assessment. Should the tenderer not provide the material, or a satisfactory reason as to why it cannot be provided, by the time for submission stated in the employer’s request, the employer may regard the tender offer as non-responsive.
F.2.19	Inspections, tests and analysis
	Provide access during working hours to premises for inspections, tests and analysis as provided for in the tender data.
F.2.22	Return all retained Tender documents within 28 day after the expiry of the validity period.

F.2.23	Certificates																														
	Include in the tender submission or provide the employer with any certificates as stated in the tender data.																														
F.3.4.1	The time and location for opening of the tender offers is: 12H00 on 08 April 2016.. The Tender Box at the George Municipality is on the First Floor, Department: Financial Services, Supply Chain Management Unit, Civic Centre, York Street, George.																														
F.3.11	Evaluation of tender offers																														
F.3.11.2	Method 1: Price and Preference In the case of a price and preference <ol style="list-style-type: none"> 1) Score tender evaluation points for price. 2) Score points for BBBEE contribution. 3) Add the points scored for price and BBBEE. 																														
F.3.11.3	Method 2: Functionality, Price and Preference In the case of functionality, price and preference <ol style="list-style-type: none"> 1) Score the functionality, rejecting all tender offers that fail to achieve the minimum number of points for functionality as stated in the Tender Data. 2) No tender must be regarded as an acceptable tender if it fails to achieve the minimum qualifying score for functionality as indicated in the tender invitation. 3) Tenders that have achieved the minimum qualification score for functionality must be evaluated further in terms of the preference points system prescribed in paragraphs 4 and 5 below. <p>The 80/20 preference point system for acquisition of services, works or goods up to Rand value of R1 million.</p> <ol style="list-style-type: none"> 4) (a)(i) The following formula must be used to calculate the points for price in respect of tenders (including price quotation) with a rand value equal to, or above R30,000 and up to Rand value of R1,000,000 (all applicable taxes included): $P_s = 80 \left[1 - \frac{P_t - P_{\min}}{P_{\min}} \right]$ <p>Where P_s = Points scored for comparative price of tender or offer under consideration; P_t = Comparative price of tender or offer under consideration; and P_{min} = Comparative price of lowest acceptable tender or offer.</p> <p>(4)(b) Subject to subparagraph (4)(c), points must be awarded to a tender for attaining the B-BBEE status level of contribution in accordance with the table below:</p> <table border="1" style="width: 100%; border-collapse: collapse; text-align: center;"> <thead> <tr> <th style="text-align: left;">B-BBEE Status Level of Contributor</th> <th>80/20 Number of Points</th> <th>90/10 Number of Points</th> </tr> </thead> <tbody> <tr><td>1</td><td>20</td><td>10</td></tr> <tr><td>2</td><td>18</td><td>9</td></tr> <tr><td>3</td><td>16</td><td>8</td></tr> <tr><td>4</td><td>12</td><td>5</td></tr> <tr><td>5</td><td>8</td><td>4</td></tr> <tr><td>6</td><td>6</td><td>3</td></tr> <tr><td>7</td><td>4</td><td>2</td></tr> <tr><td>8</td><td>2</td><td>1</td></tr> <tr><td>Non-compliant contributor</td><td>0</td><td>0</td></tr> </tbody> </table> <p>(4)(c) A maximum of 20 points may be allocated in accordance with subparagraph (4)(b). (4)(d) The points scored by tender in respect of B-BBEE contribution contemplated in subparagraph</p>	B-BBEE Status Level of Contributor	80/20 Number of Points	90/10 Number of Points	1	20	10	2	18	9	3	16	8	4	12	5	5	8	4	6	6	3	7	4	2	8	2	1	Non-compliant contributor	0	0
B-BBEE Status Level of Contributor	80/20 Number of Points	90/10 Number of Points																													
1	20	10																													
2	18	9																													
3	16	8																													
4	12	5																													
5	8	4																													
6	6	3																													
7	4	2																													
8	2	1																													
Non-compliant contributor	0	0																													

	<p>(4)(b) must be added to the points scored for price as calculated in accordance with subparagraph (4)(a).</p> <p>(4)(e) Subject to paragraph 4.3.8 the contract must be awarded to the tender who scores the highest total number of points.</p> <p>The 90/10 preference points system for acquisition of services, works or goods with a Rand value above R1 million.</p> <p>(5)(a) The following formula must be used to calculate the points for price in respect of tenders with a Rand value above R1,000,000 (all applicable taxes included):</p> $P_s = 90 \left[1 - \frac{P_t - P_{\min}}{P_{\min}} \right]$ <p>Where Ps = Points scored for comparative price of tender or offer under consideration; Pt = Comparative price of tender or offer under consideration; and Pmin = Comparative price of lowest acceptable tender or offer.</p> <p>(5)(b) Subject to subparagraph (5)(c), points must be awarded to a tender for attaining the B-BBEE status level of contribution in accordance with the table below:</p> <table border="1" data-bbox="343 862 1380 1176"> <thead> <tr> <th>B-BBEE Status Level of Contributor</th> <th>80/20 Number of Points</th> <th>90/10 Number of Points</th> </tr> </thead> <tbody> <tr> <td>1</td> <td>20</td> <td>10</td> </tr> <tr> <td>2</td> <td>18</td> <td>9</td> </tr> <tr> <td>3</td> <td>16</td> <td>8</td> </tr> <tr> <td>4</td> <td>12</td> <td>5</td> </tr> <tr> <td>5</td> <td>8</td> <td>4</td> </tr> <tr> <td>6</td> <td>6</td> <td>3</td> </tr> <tr> <td>7</td> <td>4</td> <td>2</td> </tr> <tr> <td>8</td> <td>2</td> <td>1</td> </tr> <tr> <td>Non-compliant contributor</td> <td>0</td> <td>0</td> </tr> </tbody> </table> <p>(5)(c) A maximum of 10 points may be allocated in accordance with subparagraph (5)(b).</p> <p>(5)(d) The points scored by tender in respect of B-BBEE contribution contemplated in subparagraph (5)(b) must be added to the points scored for price as calculated in accordance with subparagraph (5)(a).</p> <p>(5)(e) Subject to paragraph 4.3.8 the contract must be awarded to the tender who scores the highest total number of points.</p>	B-BBEE Status Level of Contributor	80/20 Number of Points	90/10 Number of Points	1	20	10	2	18	9	3	16	8	4	12	5	5	8	4	6	6	3	7	4	2	8	2	1	Non-compliant contributor	0	0
B-BBEE Status Level of Contributor	80/20 Number of Points	90/10 Number of Points																													
1	20	10																													
2	18	9																													
3	16	8																													
4	12	5																													
5	8	4																													
6	6	3																													
7	4	2																													
8	2	1																													
Non-compliant contributor	0	0																													
F.3.11.6	Decimal places																														
	Score price, preference and functionality, as relevant, to two decimal places.																														

F.3.13	<p>Tender offers will only be accepted if:</p> <ul style="list-style-type: none"> (a) the Tenderer has in his or her possession an original valid Tax Clearance Certificate issued by the South African Revenue Services or has made arrangements to meet outstanding tax obligations; (b) the Tenderer or any of its directors/shareholders is not listed on the Register of Tender Defaulters in terms of the Prevention and Combating of Corrupt Activities Act of 2004 as a person prohibited from doing business with the public sector; (c) the Tenderer submits a letter of intent from an approved insurer undertaking to provide the Performance Bond to the format included in Part T2.2 of the procurement document. (d) the Tenderer is registered with the Construction Industry Development Board in an appropriate contractor grading designation. (e) the Tenderer has not: <ul style="list-style-type: none"> (i) abused the Employer’s Supply Chain Management System; or (ii) failed to perform on any previous contract and has been given a written notice to this effect. (f) the tender offer is signed by a person authorized to sign on behalf of the Tenderer. (g) the Tenderer has complete the Compulsory Enterprise Questionnaire and there are no conflicts of interest which may impact on the Tenderer’s ability to perform the Contract in the best interests of the Employer or potentially compromise the tender process. (h) the Tenderer is registered and in good standing with the compensation fund or with a licensed compensation insurer; (i) the Employer is reasonably satisfied that the Tenderer has in terms of the Construction Regulations, 2003, issued in terms of the Occupational Health and Safety Act, 1993, the necessary competencies and resources to carry out the work safely. (j) the Tenderer has not failed to perform on any previous contracts and has not been given a written notice to the effect. (k) the Tenderer has submitted certified copies of the directors, owners and shareholders identity documents with the tender offer. (l) the Tenderer must be registered on the Western Cape Supplier Database, Copies of the registration forms are available on the George Municipality’s website: www.george.org.za (m) Tenderer who submitted a tender as a Joint Venture has included an acceptable Joint Venture Agreement with his/her tender or has provided a letter of intent to form a Joint Venture signed by all parties. (n) the Tenderer is not in arrears for more than 30 days with municipal rates and taxes and services charges. (o) the Tenderer complies with the specifications and conditions applicable to the product and submitted all the required documentation as stipulated in part C3: Scope of Works.
F.3.17	Provide copies of the contracts
	The employer will provide the successful tenderer with one (1) paper copy of the signed contract as soon as possible after completion and signing of the form of offer and acceptance.
F.3.20	<p>The additional conditions of Tender are:</p> <ol style="list-style-type: none"> 1. George Municipality may also request that the Tenderer provide written evidence that his/her financial, labour and resources are adequate for carrying out the project. 2. The George Municipality reserves the right to appoint a firm of chartered accountants and auditors and/or execute any other financial investigations on the financial resources of any Tenderer. The Tenderer shall provide all reasonable assistance in such investigations. 3. Tender documents must be completed in black ink, and prices must include VAT, only where applicable and requested in the schedule of activities. 4. Corrections may not be made by means of a correction fluid such as Tipp-Ex or a similar product. In the event of a mistake having been made it shall be crossed out in ink and be accompanied by a full signature at each and every alteration. The Municipality reserves the right to reject the Tender if corrections are not made in accordance with the above.

F.3.22	Compliance with Occupational Health and Safety Act 1993
	Tenderers are to note that the requirements to the Occupational Health and Safety (OHS) Act No. 85 of 1993. The tenderer shall be deemed to have read and fully understood the requirements of the above Act and Regulations and to have allowed for all costs in compliance therewith during supply and delivery of all materials or any other services.

B-BBEE certificates submitted with the tender documents MUST be a VALID ORIGINAL B-BBEE CERTIFICATE or VALID CERTIFIED COPY OF THE B-BBEE CERTIFICATE.

In the case of a Trust, Consortium or Joint Venture, they will qualify for points for their B-BBEE status level as a legal entity, provided that the entity submits their B-BBEE status level certificate.

TAX CLEARANCE CERTIFICATE

It is a condition of bid that the taxes of the successful bidder must be in order, or that satisfactory arrangements have been made with South African Revenue Service (SARS) to meet the bidder’s tax obligations.

1. In order to meet this requirement bidders are required to complete in full form TCC 001 “Application for a Tax Clearance Certificate” and submit it to any SARS branch office nationally. The Tax Clearance Certificate Requirements are also applicable to foreign bidders / individuals who wish to submit bids.
2. Copies of the TCC 001 “Application for a Tax Clearance Certificate” form are available from any SARS branch office nationally or on the website www.sars.gov.za.
3. Applications for the Tax Clearance Certificates may also be made via eFiling. In order to use this provision, taxpayers will need to register with SARS as eFilers through the website www.sars.gov.za.
4. SARS will then furnish the bidder with a Tax Clearance Certificate that will be valid for a period of 1 (one) year from the date of approval.
5. The original Tax Clearance Certificate must be submitted together with the bid. Failure to submit the original and valid Tax Clearance Certificate will result in the invalidation of the bid. Certified copies of the Tax Clearance Certificate will not be acceptable.
6. In bids where Consortia / Joint Ventures / Sub-contractors are involved, each party must submit a separate Tax Clearance Certificate.
7. Copies of the TCC 001 “Application for a Tax Clearance” form are available from any SARS branch office nationally or on the website: www.sars.gov.za.
8. Applications for the Tax Clearance Certificates may also be made via eFiling. In order to use this provision, taxpayers will need to register with SARS as eFilers through the website www.sars.gov.za.

MBD4

DECLARATION OF INTEREST

1.	No bid will be accepted from persons in the service of the state*.	
2.	Any person, having a kinship with persons in the service of the state, including a blood relationship, may make an offer or offers in terms of this invitation to bid. In view of possible allegations of favouritism, should the resulting bid, or part thereof, be awarded to persons connected with or related to persons in the service of the state, it is required that the bidder or their authorised representative declare their position in relation to the evaluating/adjudicating authority.	
3.	In order to give effect to the above, the following questionnaire must be completed and submitted with the bid.	
3.1	Full Name of bidder or his / her representative:	
3.2	Identity number:	
3.3	Position occupied in the Company (director, trustee, shareholder ²):	
3.4	Company Registration Number:	
3.5	Tax Reference Number:	
3.6	VAT Registration Number:	
3.7	The names of all directors / trustees / shareholders / members, their individual identity numbers and state employee numbers (where applicable) must be indicated in paragraph 4 below.	
3.8	Are you presently in the service of the state?*	YES / NO
3.8.1	If yes, furnish the following particulars: Name of person / director / trustee / shareholder member: Name of state institution at which you or the person connected to the bidder is employed: Position occupied in the state institution: Any other particulars:	

<p>3.9</p> <p>3.9.1</p>	<p>Have you been in the service of the state for the past twelve months?</p> <p>If so, furnish particulars.</p> <p>.....</p> <p>.....</p>	<p>YES / NO</p>
<p>3.10</p> <p>3.10.1</p>	<p>Do you have any relationship (family, friend, other) with persons in the service of the state and who may be involved with the evaluation and or adjudication of this bid?</p> <p>If yes, furnish the following particulars:</p> <p>Name of person:</p> <p>Name of state institution at which you or the person connected to the bidder is employed:</p> <p>.....</p> <p>Position occupied in the state institution:</p> <p>.....</p> <p>Any other particulars:</p> <p>.....</p>	<p>YES / NO</p>
<p>3.11</p> <p>3.11.1</p>	<p>Are you aware of any relationship (family, friend, other) between the bidder and any person in the service of the state who may be involved with the evaluation and or adjudication of this bid?</p> <p>If yes, furnish the following particulars:</p> <p>Name of person:</p> <p>Name of state institution at which you or the person connected to the bidder is employed:</p> <p>.....</p> <p>Position occupied in the state institution:</p> <p>Any other particulars:</p> <p>.....</p>	<p>YES / NO</p>
<p>3.12</p> <p>3.12.1</p>	<p>Are any of the company’s directors, managers, principal shareholders or stakeholders in the service of the state?</p> <p>If yes, furnish the following particulars:</p>	<p>YES / NO</p>

	<p>Name of person / director / trustee / shareholder / member: </p> <p>Name of state institution at which you or the person connected to the bidder is employed: </p> <p>Position occupied in the state institution:</p> <p>Any other particulars:</p> <p>.....</p>	
<p>3.13</p> <p>3.13.1</p>	<p>Is any spouse, child or parent of the company’s directors, trustees, managers, principle shareholders or stakeholders in the service of the state?</p> <p>If yes, furnish the following particulars:</p> <p>Name of person / director / trustee / shareholder / member: </p> <p>Name of state institution at which you or the person connected to the bidder is employed: </p> <p>Position occupied in the state institution:</p> <p>Any other particulars:</p> <p>.....</p>	<p>YES / NO</p>
<p>3.14</p> <p>3.14.1</p>	<p>Do you or any of the directors, trustees, managers, principle shareholders, or stakeholders of this company have any interest in any other related companies or business whether or not they are bidding for this contract?</p> <p>If yes, furnish particulars:</p> <p>.....</p> <p>.....</p>	<p>YES / NO</p>
<p>4. Full details of directors / trustees / members / shareholders: (certified copies of ID documents must be attached)</p>		

THE FOLLOWING INFORMATION IS <u>COMPULSORY</u> TO COMPLETE:			
Full Name	Identity Number	Individual Tax Number for each Director	State Employee Number (where applicable)
5.	The contract will be automatically cancelled if there is a conflict of interest which is not disclosed by the bidder.		

.....
Signature

.....
Date

.....
Capacity

.....
Name of Bidder

'MSCM Regulations: “in the service of the state” means to be -

- (a) a member of –
 - (i) any municipal council;
 - (ii) any provincial legislature; or
 - (iii) the National Assembly or the National Council of Provinces;
- (b) a member of the board of directors of any municipal entity;
- (c) an official or any Municipality or municipal entity;
- (d) an employee of any national or provincial department, national or provincial public entity or constitutional institution within the meaning of the Public Finance Management Act, 1999 (Act No. 1 of 1999);
- (e) a member of the accounting authority of any national or provincial entity; or
- (f) an employee of Parliament or a provincial legislature.

²”Shareholder” means a person who owns shares in the company and is actively involved in the management of the company or business and exercise control over the company.

PREFERENCE POINTS CLAIM FORM IN TERMS OF THE PREFERENTIAL PROCUREMENT REGULATIONS 2011

This preference form must form part of all bids invited. It contains general information and serves as a claim form for preference points for Broad-Based Black Economic Empowerment (B-BBEE) Status Level of Contribution

NB: BEFORE COMPLETING THIS FORM, BIDDERS MUST STUDY THE GENERAL CONDITIONS, DEFINITIONS AND DIRECTIVES APPLICABLE IN RESPECT OF B-BBEE, AS PRESCRIBED IN THE PREFERENTIAL PROCUREMENT REGULATIONS, 2011.

1. GENERAL CONDITIONS

- 1.1 The following preference point systems are applicable to all bids:
- the 80/20 system for requirements with a Rand value of up to R1 000 000 (all applicable taxes included); and
 - the 90/10 system for requirements with a Rand value above R1 000 000 (all applicable taxes included).
- 1.2 The value of this bid is estimated not exceed R1 000 000 (all applicable taxes included) and therefore the 80/20 system shall be applicable.
- 1.3 Preference points for this bid shall be awarded for:
- (a) Price; and
 - (b) B-BBEE Status Level of Contribution.

The maximum points for this bid are allocated as follows:

	POINTS
1.3.1.1 PRICE	80
1.3.1.2 B-BBEE STATUS LEVEL OF CONTRIBUTION	20
Total points for Price and B-BBEE must not exceed	100

- 1.4 Failure on the part of a bidder to fill in and/or to sign this form and submit a B-BBEE Verification Certificate from a Verification Agency accredited by the South African Accreditation System (SANAS) or a Registered Auditor approved by the Independent Regulatory Board of Auditors (IRBA) or an Accounting Officer as contemplated in the Close Corporation Act (CCA) together with the bid, will be interpreted to mean that preference points for B-BBEE status level of contribution are not claimed.
- 1.5 The purchaser reserves the right to require of a bidder, either before a bid is adjudicated or at any time subsequently, to substantiate any claim in regard to preferences, in any manner required by the purchaser.

2. DEFINITIONS

- 2.1 “**all applicable taxes**” includes value-added tax, pay as you earn, income tax, unemployment insurance fund contributions and skills development levies;
- 2.2 “**B-BBEE**” means broad-based black economic empowerment as defined in section 1 of the Broad-Based Black Economic Empowerment Act;
- 2.3 “**B-BBEE status level of contributor**” means the B-BBEE status received by a measured entity based on its overall performance using the relevant scorecard contained in the Codes of Good Practice on Black Economic Empowerment, issued in terms of section 9(1) of the Broad-Based Black Economic Empowerment Act;
- 2.4 “**bid**” means a written offer in a prescribed or stipulated form in response to an invitation by an organ of state for the provision of services, works or goods, through price quotations, advertised competitive bidding processes or proposals;
- 2.5 “**Broad-Based Black Economic Empowerment Act**” means the Broad-Based Black Economic Empowerment Act, 2003 (Act No. 53 of 2003);
- 2.6 “**comparative price**” means the price after the factors of a non-firm price and all unconditional discounts that can be utilized have been taken into consideration;
- 2.7 “**consortium or joint venture**” means an association of persons for the purpose of combining their expertise, property, capital, efforts, skill and knowledge in an activity for the execution of a contract;
- 2.8 “**contract**” means the agreement that results from the acceptance of a bid by an organ of state;
- 2.9 “**EME**” means any enterprise with an annual total revenue of R5 million or less .
- 2.10 “**Firm price**” means the price that is only subject to adjustments in accordance with the actual increase or decrease resulting from the change, imposition, or abolition of customs or excise duty and any other duty, levy, or tax, which, in terms of the law or regulation, is binding on the contractor and demonstrably has an influence on the price of any supplies, or the rendering costs of any service, for the execution of the contract;
- 2.11 “**functionality**” means the measurement according to predetermined norms, as set out in the bid documents, of a service or commodity that is designed to be practical and useful, working or operating, taking into account, among other factors, the quality, reliability, viability and durability of a service and the technical capacity and ability of a bidder;
- 2.12 “**non-firm prices**” means all prices other than “firm” prices;
- 2.13 “**person**” includes a juristic person;

- 2.14 “**rand value**” means the total estimated value of a contract in South African currency, calculated at the time of bid invitations, and includes all applicable taxes and excise duties;
- 2.15 “**sub-contract**” means the primary contractor’s assigning, leasing, making out work to, or employing, another person to support such primary contractor in the execution of part of a project in terms of the contract;
- 2.16 “**total revenue**” bears the same meaning assigned to this expression in the Codes of Good Practice on Black Economic Empowerment, issued in terms of section 9(1) of the Broad-Based Black Economic Empowerment Act and promulgated in the *Government Gazette* on 9 February 2007;
- 2.17 “**trust**” means the arrangement through which the property of one person is made over or bequeathed to a trustee to administer such property for the benefit of another person; and
- 2.18 “**trustee**” means any person, including the founder of a trust, to whom property is bequeathed in order for such property to be administered for the benefit of another person.

3. ADJUDICATION USING A POINT SYSTEM

- 3.1 The bidder obtaining the highest number of total points will be awarded the contract.
- 3.2 Preference points shall be calculated after prices have been brought to a comparative basis taking into account all factors of non-firm prices and all unconditional discounts.
- 3.3 Points scored must be rounded off to the nearest 2 decimal places.
- 3.4 In the event that two or more bids have scored equal total points, the successful bid must be the one scoring the highest number of preference points for B-BBEE.
- 3.5 However, when functionality is part of the evaluation process and two or more bids have scored equal points including equal preference points for B-BBEE, the successful bid must be the one scoring the highest score for functionality.
- 3.6 Should two or more bids be equal in all respects, the award shall be decided by the drawing of lots.

4. POINTS AWARDED FOR PRICE

4.1 THE 80/20 OR 90/10 PREFERENCE POINT SYSTEMS

A maximum of 80 or 90 points is allocated for price on the following basis:

$$\begin{array}{ccc}
 \mathbf{80/20} & \mathbf{or} & \mathbf{90/10} \\
 P_s = 80 \left(1 - \frac{P_t - P_{\min}}{P_{\min}} \right) & \mathbf{or} & P_s = 90 \left(1 - \frac{P_t - P_{\min}}{P_{\min}} \right)
 \end{array}$$

Where

Ps = Points scored for comparative price of bid under consideration
 Pt = Comparative price of bid under consideration
 Pmin = Comparative price of lowest acceptable bid

5. Points awarded for B-BBEE Status Level of Contribution

- 5.1 In terms of Regulation 5 (2) and 6 (2) of the Preferential Procurement Regulations, preference points must be awarded to a bidder for attaining the B-BBEE status level of contribution in accordance with the table below:

B-BBEE Status Level of Contributor	Number of points (90/10 system)	Number of points (80/20 system)
1	10	20
2	9	18
3	8	16
4	5	12
5	4	8
6	3	6
7	2	4
8	1	2
Non-compliant contributor	0	0

- 5.2 Bidders who qualify as EMEs in terms of the B-BBEE Act must submit a certificate issued by a Verification Agency accredited by SANAS or a Registered Auditor. Registered auditors do not need to meet the prerequisite for IRBA’s approval for the purpose of conducting verification and issuing EMEs with B-BBEE Status Level Certificates.
- 5.3 Bidders other than EMEs must submit their original and valid B-BBEE status level verification certificate or a certified copy thereof, substantiating their B-BBEE rating issued by a Registered Auditor approved by IRBA or a Verification Agency accredited by SANAS.
- 5.4 A trust, consortium or joint venture, will qualify for points for their B-BBEE status level as a legal entity, provided that the entity submits their B-BBEE status level certificate.
- 5.5 A trust, consortium or joint venture will qualify for points for their B-BBEE status level as an unincorporated entity, provided that the entity submits their

consolidated B-BBEE scorecard as if they were a group structure and that such a consolidated B-BBEE scorecard is prepared for every separate bid.

- 5.6 Tertiary institutions and public entities will be required to submit their B-BBEE status level certificates in terms of the specialized scorecard contained in the B-BBEE Codes of Good Practice.
- 5.7 A person will not be awarded points for B-BBEE status level if it is indicated in the bid documents that such a bidder intends sub-contracting more than 25% of the value of the contract to any other enterprise that does not qualify for at least the points that such a bidder qualifies for, unless the intended sub-contractor is an EME that has the capability and ability to execute the sub-contract.
- 5.8 A person awarded a contract may not sub-contract more than 25% of the value of the contract to any other enterprise that does not have an equal or higher B-BBEE status level than the person concerned, unless the contract is sub-contracted to an EME that has the capability and ability to execute the sub-contract.

6. BID DECLARATION

- 6.1 Bidders who claim points in respect of B-BBEE Status Level of Contribution must complete the following:

7. B-BBEE STATUS LEVEL OF CONTRIBUTION CLAIMED IN TERMS OF PARAGRAPHS 1.3.1.2 AND 5.1

- 7.1 B-BBEE Status Level of Contribution: =(maximum of 10 or 20 points)

(Points claimed in respect of paragraph 7.1 must be in accordance with the table reflected in paragraph 5.1 and must be substantiated by means of a B-BBEE certificate issued by a Verification Agency accredited by SANAS or a Registered Auditor approved by IRBA or an Accounting Officer as contemplated in the CCA).

8 SUB-CONTRACTING

- 8.1 Will any portion of the contract be sub-contracted? YES / NO
(delete which is not applicable)
- 8.1.1 If yes, indicate:
 - (i) what percentage of the contract will be subcontracted?%
 - (ii) the name of the sub-contractor?
 - (iii) the B-BBEE status level of the sub-contractor?
 - (iv) whether the sub-contractor is an EME?
YES / NO (delete which is not applicable)

9 DECLARATION WITH REGARD TO COMPANY/FIRM

- 9.1 Name of firm :

9.2 VAT registration number :.....

9.3 Company registration number :.....

9.4 TYPE OF COMPANY/ FIRM

- Partnership/Joint Venture / Consortium
 - One person business/sole propriety
 - Close corporation
 - Company
 - (Pty) Limited
- [TICK APPLICABLE BOX]

9.5 DESCRIBE PRINCIPAL BUSINESS ACTIVITIES

.....
.....
.....

9.6 COMPANY CLASSIFICATION

- Manufacturer
 - Supplier
 - Professional service provider
 - Other service providers, e.g. transporter, etc.
- [TICK APPLICABLE BOX]

9.7 MUNICIPAL INFORMATION

Municipality where business is situated

Registered Account Number

Stand Number

9.8 TOTAL NUMBER OF YEARS THE COMPANY/FIRM HAS BEEN IN BUSINESS?

.....

9.9 I/we, the undersigned, who is / are duly authorised to do so on behalf of the company/firm, certify that the points claimed, based on the B-BBE status level of contribution indicated in paragraph 7 of the foregoing certificate, qualifies the company/ firm for the preference(s) shown and I / we acknowledge that:

8. The information furnished is true and correct;

- (ii) The preference points claimed are in accordance with the General Conditions as indicated in paragraph 1 of this form.

- (iii) In the event of a contract being awarded as a result of points claimed as shown in paragraph 7, the contractor may be required to furnish documentary proof to the satisfaction of the purchaser that the claims are correct;

- (iv) If the B-BBEE status level of contribution has been claimed or obtained on a fraudulent basis or any of the conditions of contract have not been fulfilled, the purchaser may, in addition to any other remedy it may have –
 - (a) disqualify the person from the bidding process;
 - (b) recover costs, losses or damages it has incurred or suffered as a result of that person’s conduct;
 - (c) cancel the contract and claim any damages which it has suffered as a result of having to make less favourable arrangements due to such cancellation;
 - (d) restrict the bidder or contractor, its shareholders and directors, or only the shareholders and directors who acted on a fraudulent basis, from obtaining business from any organ of state for a period not exceeding 10 years, after the audi alteram partem (hear the other side) rule has been applied; and
 - (e) forward the matter for criminal prosecution.

.....
SIGNATURE(S) OF BIDDER(S)

.....
DATE

SWORN AFFIDAVIT – BBEE EXEMPTED MICRO ENTERPRISE**SWORN AFFIDAVIT – B-BBEE EXEMPTED MICRO ENTERPRISE**

I, the undersigned,

Full name & Surname	
Identity number	

Hereby declare under oath as follows:

- The contents of this statement are to the best of my knowledge a true reflection of the facts.
- I am a member / director / owner of the following enterprise and am duly authorised to act on its behalf:

Enterprise Name	
Trading Name	
Registration Number	
Enterprise Address	

- I hereby declare under oath that:
 - The enterprise is _____% black owned;
 - The enterprise is _____% black woman owned;
 - Based on the management accounts and other information available on the _____ financial year, the income did not exceed R10,000,000.00 (ten million rands);
 - Please confirm on the table below the B-BBEE level contributor, **by ticking the applicable box.**

100% black owned	Level One (135% B-BBEE procurement recognition)	
More than 51% black owned	Level Two (125% B-BBEE procurement recognition)	
Less than 51% black owned	Level Four (100% B-BBEE procurement recognition)	

- The entity is an empowering supplier in terms of **the dti** Codes of Good Practice.
- I know and understand the contents of this affidavit and I have no objection to take the prescribed oath and consider the oath binding on my conscience and on the owners of the enterprise which I represent in this matter.
- The sworn affidavit will be valid for a period of 12 months from the date signed by commissioner.

Deponent Signature: _____

Date: _____

 Commissioner of Oaths
 Signature & stamp

MBD8

DECLARATION OF BIDDER'S PAST SUPPLY CHAIN MANAGEMENT PRACTICES

- 1 This Municipal Bidding Document must form part of all bids invited.
- 2 It serves as a declaration to be used by municipalities and municipal entities in ensuring that when goods and services are being procured, all reasonable steps are taken to combat the abuse of the supply chain management system.
- 3 The bid of any bidder may be rejected if that bidder, or any of its directors have:
 - 3.1 abused the municipality's / municipal entity's supply chain management system or committed any improper conduct in relation to such system;
 - 3.2 been convicted for fraud or corruption during the past five years;
 - 3.3 willfully neglected, reneged on or failed to comply with any government, municipal or other public sector contract during the past five years; or
 - 3.4 been listed in the Register for Tender Defaulters in terms of section 29 of the Prevention and Combating of Corrupt Activities Act (No 12 of 2004).
4. **In order to give effect to the above, the following questionnaire must be completed and submitted with the bid.**

Item	Question	Yes	No
4.1	<p>Is the bidder or any of its directors listed on the National Treasury's database as a company or person prohibited from doing business with the public sector?</p> <p>(Companies or persons who are listed on this database were informed in writing of this restriction by the National Treasury after the <i>audi alteram partem</i> rule was applied).</p> <p>The Database of Restricted Suppliers now resides on the National Treasury's ebsite (www.treasury.gov.za) and can be accessed by clicking on its link at the bottom of the home page.</p>	Yes <input type="checkbox"/>	No <input type="checkbox"/>
4.1.1	If so, furnish particulars:		

4.2	Is the bidder or any of its directors listed on the Register for Tender Defaulters in terms of section 29 of the Prevention and Combating of Corrupt Activities Act (No 12 of 2004)? The Register for Tender Defaulters can be accessed on the National Treasury’s website (www.treasury.gov.za) by clicking on its link at the bottom of the home page.	Yes <input type="checkbox"/>	No <input type="checkbox"/>
4.2.1	If so, furnish particulars:		
4.3	Was the bidder or any of its directors convicted by a court of law (including a court of law outside the Republic of South Africa) for fraud or corruption during the past five years?	Yes <input type="checkbox"/>	No <input type="checkbox"/>
4.3.1	If so, furnish particulars:		
Item	Question	Yes	No
4.4	Does the bidder or any of its directors owe any municipal rates and taxes or municipal charges to the municipality / municipal entity, or to any other municipality / municipal entity, that is in arrears for more than three months?	Yes <input type="checkbox"/>	No <input type="checkbox"/>
4.4.1	If so, furnish particulars:		
4.5	Was any contract between the bidder and the municipality / municipal entity or any other organ of state terminated during the past five years on account of failure to perform on or comply with the contract?	Yes <input type="checkbox"/>	No <input type="checkbox"/>
4.5.1	If so, furnish particulars:		

CERTIFICATION

**I, THE UNDERSIGNED (FULL NAME)
CERTIFY THAT THE INFORMATION FURNISHED ON THIS DECLARATION
FORM IS TRUE AND CORRECT.**

**I ACCEPT THAT, IN ADDITION TO CANCELLATION OF A CONTRACT,
ACTION MAY BE TAKEN AGAINST ME SHOULD THIS DECLARATION
PROVE TO BE FALSE.**

.....
Signature

.....
Date

.....
Position

.....
Name of Bidder

CERTIFICATE OF INDEPENDENT BID DETERMINATION

1. This Municipal Bidding Document (MBD) must form part of all bids¹ invited.
2. Section 4 (1) (b) (iii) of the Competition Act No. 89 of 1998, as amended, prohibits an agreement between, or concerted practice by, firms, or a decision by an association of firms, if it is between parties in a horizontal relationship and if it involves collusive bidding (or bid rigging).² Collusive bidding is a *pe se* prohibition meaning that it cannot be justified under any grounds.
3. Municipal Supply Regulation 38(1) prescribes that a supply chain management policy must provide measures for the combating of abuse of the supply chain management system, and must enable the accounting officer, among others, to:
 - 3.1 take all reasonable steps to prevent such abuse;
 - 3.2 reject the bid of any bidder if that bidder or any of its directors has abused the supply chain management system of the municipality or municipal entity or has committed any improper conduct in relation to such system; and
 - 3.3 cancel a contract awarded to a person if the person committed any corrupt or fraudulent act during the bidding process or the execution of the contract.
4. This MBD serves as a certificate of declaration that would be used by institutions to ensure that, when bids are considered, reasonable steps are taken to prevent any form of bid-rigging.
5. In order to give effect to the above, the attached Certificate of Bid Determination (MBD9) must be completed and submitted with the bid:

¹ Includes price quotations, advertised competitive bids, limited bids and proposals.

² Bid rigging (or collusive bidding) occurs when businesses, that would otherwise be expected to compete, secretly conspire to raise prices or lower the quality of goods and / or services for purchasers who wish to acquire goods and / or services through a bidding process. Bid rigging is, therefore, an agreement between competitors not to compete.

CERTIFICATE OF INDEPENDENT BID DETERMINATION

I, the undersigned, in submitting the accompanying bid:

_____ (Bid Number and Description)

in response to the invitation for the bid made by:

GEORGE MUNICIPALITY

do hereby make the following statements that I certify to be true and complete in every respect:

I certify, on behalf of: _____ that:
(Name of Bidder)

- 6. I have read and I understand the contents of this Certificate;
- 7. I understand that the accompanying bid will be disqualified if this Certificate is found not to be true and complete in every respect;
- 8. I am authorized by the bidder to sign this Certificate, and to submit the accompanying bid, on behalf of the bidder;
- 9. Each person whose signature appears on the accompanying bid has been authorized by the bidder to determine the terms of, and to sign, the bid, on behalf of the bidder;
- 10. For the purposes of this Certificate and the accompanying bid, I understand that the word “competitor” shall include any individual or organization, other than the bidder, whether or not affiliated with the bidder, who:
 - 10.1 has been requested to submit a bid in response to this bid invitation;
 - 10.2 could potentially submit a bid in response to this bid invitation, based on their qualifications, abilities or experience; and
 - 10.3 Provides the same goods and services as the bidder and/or is in the same line of business as the bidder.

MBD9

- 11 The bidder has arrived at the accompanying bid independently from, and without consultation, communication, agreement or arrangement with any competitor. However communication between partners in a joint venture or consortium³ will not be construed as collusive bidding.
- 12 In particular, without limiting the generality of paragraphs 6 above, there has been no consultation, communication, agreement or arrangement with any competitor regarding:
 - 12.1 prices;
 - 12.2 geographical area where product or service will be rendered (market allocation);
 - 12.3 methods, factors or formulas used to calculate prices;
 - 12.4 the intention or decision to submit or not to submit, a bid;
 - 12.5 the submission of a bid which does not meet the specifications and conditions of the bid; or bidding with the intention not to win the bid.
- 9. In addition, there have been no consultations, communications, agreements or arrangements with any competitor regarding the quality, quantity, specifications and conditions or delivery particulars of the products or services to which this bid invitation relates.
- 10. The terms of the accompanying bid have not been, and will not be, disclosed by the bidder, directly or indirectly, to any competitor, prior to the date and time of the official bid opening or of the awarding of the contract.
- 11. I am aware that, in addition and without prejudice to any other remedy provided to combat any restrictive practices related to bids and contracts, bids that are suspicious will be reported to the Competition Commission for investigation and possible imposition of administrative penalties in terms of section 59 of the Competition Act No. 89 of 1998 and or may be reported to the National Prosecuting Authority (NPA) for criminal investigation and or may be restricted from conducting business with the public sector for a period not exceeding ten (10) years in terms of the Prevention and Combating of Corrupt Activities Act No. 12 of 2004 or any other applicable legislation.

.....
Signature

.....
Date

.....
Position

.....
Name of Bidder

³ Joint venture or Consortium means an association of persons for the purpose of combining their expertise, property, capital, efforts, skill and knowledge in an activity for the execution of a contract.

CERTIFICATE FOR MUNICIPAL SERVICES (COMPULSORY TO COMPLETE)

Information required in terms of the George Municipality’s Supply Chain Management Policy, Clause 28 (i) (c) (ii).

Tender Number: COM 006/2016
Name of the Bidder: _____

DETAILS OF THE BIDDER/S: Owner / Proprietor / Director(s) / Partner(s), etc:

Physical Business address of the Bidder	Municipal Account Number(s)

If there is not enough space for all the names, please attach the additional details to the Tender document.

Name of Director / Member / Partner	Identity Number	Physical residential address of Director / Member / Partner	Municipal Account number(s)

I, _____, the undersigned,
(full name in block letters)

certify that the information furnished on this declaration form is correct and that I/we have no undisputed commitments for municipal services towards a municipality or other service provider in respect of which payment is overdue for more than 30 days.

Signature

THUS DONE AND SIGNED for and on behalf of the Bidder / Contractor

at _____ on the _____ day of _____ 2016

PLEASE NOTE:

MUNICIPAL ACCOUNTS FOR ALL PROPERTIES OWNED BY BIDDER/S MUST BE ATTACHED TO THE TENDER DOCUMENT!

Even if the requested information is not applicable to the Bidder, the table above should be endorsed **NOT APPLICABLE** with a reason and **THIS DECLARATION MUST STILL BE COMPLETED AND SIGNED**. In the event of leasing, a lease agreement **MUST** be attached to the tender document.

GEORGE MUNICIPALITY

DEPARTMENT: COMMUNITY SERVICES

CONTRACT NUMBER COM 006/2016

APPOINTMENT OF A CONTRACTOR FOR THE BUILDING OF PUBLIC
TOILETS AT VAN DER STEL SQUARE

Returnable Documents (Part T2)

(ALL Documents and Schedules MUST BE RETURNED for the TENDER to Qualify)

- T2.1 List of Returnable Schedules Required for Tender Evaluation
- T2.1 Returnable Schedules
- T2.2 Other documents that will be incorporated into the contract
- T2.3 Returnable Schedules that will be incorporated in the contract

NOTE:

Although the documents under Part T2 is headed “Returnable Documents” in line with the CIDB model, these are not the only documents to be returned together with the Tender. **All** the documents indicated on document T1, must be completed and signed where applicable and submitted as a **complete set of documents**.

GEORGE MUNICIPALITY

DEPARTMENT: COMMUNITY SERVICES

CONTRACT NUMBER COM 006/2016

**APPOINTMENT OF A CONTRACTOR FOR THE BUILDING OF PUBLIC
TOILETS AT VAN DER STEL SQUARE**

**List of Returnable Schedules Required for Tender
Evaluation Purposes (T2.1)**

- Form 2.1.1 General Information
- Form 2.1.2 Authority for Signatory
- Form 2.1.3 Schedule of Work Carried Out by Tenderer
- Form 2.1.4 Proposed Key Personnel
- Form 2.1.5 Schedule of Infrastructure and Resources
- Form 2.1.6 Schedule of Proposed Sub-Consultants
- Form 2.1.7 Financial References

FORM 2.1.1 GENERAL INFORMATION

1. Name of tendering entity: _____

1. Contact details

Address : _____

Tel no : (_____) _____

Fax no : (_____) _____

E-mail address : _____

2. Legal entity: Mark with an **X**.

Sole proprietor	
Partnership	
Close corporation	
Company (Pty) Ltd	
Joint venture	

In the case of a Joint venture, provide details on joint venture members:

Joint venture member	Type of entity (as defined above)

3. Income tax reference number: _____
 (in the case of a joint venture, provide for all joint venture members)

4. Regional services area where the enterprise is registered: _____
 (In the case of a joint venture, provide for all joint venture members)

5. Regional services levy registration number: _____
 (In the case of a joint venture, provide for all joint venture members)

6. VAT registration number: _____
 (In the case of a joint venture, provide for all joint venture members)

Returnable Schedules Required for Tender Evaluation

Part T2.1

- 8. Company or closed corporation registration number: _____
(In the case of a joint venture, provide for all joint venture members)
- 9. Details of proprietor, partners, closed corporation members, or company directors, indicating technical qualifications where applicable (Form on the next page).
- 10. For joint ventures the following must be attached (**COMPULSORY**):
 - Written power of attorney for authorised signatory.
 - **Pro-forma of the joint venture agreement.**
* If the Joint Venture Agreement is not attached, the tender will not be considered!

DETAILS OF PROPRIETOR, PARTNERS, CLOSED CORPORATION MEMBERS OR COMPANY DIRECTORS

Name and Identity Number	Relevant qualifications and experience	Years of relevant experience

Name of Tendering Entity : _____

Signature : _____ **Date :** _____

FORM 2.1.2 AUTHORITY FOR SIGNATORY

Details of person responsible for Tender process

Name

Contact number ..(.....)

Address of office submitting the Tender

.....

.....

Telephone no ..(.....)

Fax no ..(.....)

E-mail address

Signatories for close corporations and companies shall confirm their authority by attaching to this form a **duly signed and dated original or certified copy** of the relevant resolution of their members or their board of directors, as the case may be.

“By resolution of the board of directors passed on *(date)*

Mr.

has been duly authorized to sign all documents in connection with the Tender for Contract Number **COM 006/2016** and any Contract which may arise there from on behalf of

(BLOCK CAPITALS)

.....

.....

SIGNED ON BEHALF OF THE COMPANY

IN HIS CAPACITY AS

DATE

FULL NAMES OF SIGNATORY

AS WITNESSES 1.

2.

FORM 2.1.3 SCHEDULE OF WORK CARRIED OUT BY TENDERER

Previous experience

Provide the following information on maximum (15) relevant previous project experience only over the last 10 years (indicate specifically projects of similar or larger size and which are similar with regard to type of work). In addition to any requirements, bidders must furnish particulars of:

- a. all construction works provided to an organ of state in the last five years;
- b. any similar construction works provided to an organ of state in the last five years.

This information is material to the award of the Contract.

Description	Value (R, VAT excluded)	Year(s) executed	Reference		
			Name	Organisati on	Tel no

**Name of Tendering
Entity:**

Signature :

Date :

FORM 2.1.4 PROPOSED KEY PERSONNEL

The Tenderer shall list below the key personnel (including first nominee and the second choice alternate), whom he proposes to employ on the project should his tender be accepted, both at his headquarters and on the Site, to direct and for the execution of the work, together with their qualifications, experience, positions held and their nationalities.

DESIGNATION	NAME OF	NATIONALITY:	SUMMARY OF		HDI Status	Fee (Time Based)
	NOMINEE (ii) ALTERNATE		QUALIFICATIONS AND NQF STATUS	EXPERIENCE AND PRESENT OCCUPATION	Yes/No	
HEADQUARTERS Partner/director						
Project manager						
Other key staff (give designation)						

Name of Tendering Entity : _____

Signature : _____ **Date :** _____

Returnable Schedules Required For Tender Evaluation

Part T2.1

Form 2.1.4 continued

DESIGNATION	NAME OF	NATIONALITY:	SUMMARY OF			HDI Status	Fee (Time Based)
	NOMINEE (ii) ALTERNATE		QUALIFICATIONS AND NQF STATUS	EXPERIENCE AND OCCUPATION	PRESENT	Yes/No	
CONSTRUCTION MONITORING Engineer on Site							
Other key staff (give designation)							

Name of Tendering Entity : _____

Signature : _____ **Date :** _____

FORM 2.1.5 SCHEDULE OF INFRASTRUCTURE AND RESOURCES

Provide information on the following:

Infrastructure and resources available

Physical facilities

Description	Address	Area (m ²)

Equipment

Provide information on equipment and resources that you have available for this project (attach details if the spaces provided are not enough)

Description : Equipment owned and available	Number of units
Description : Vehicles owned and available	Number of
Description : Computer Hardware owned and available	Number of units
Description : Software to be Used	Number of units

Size of enterprise and current workload:

What was your turnover in the previous financial year?

What is the estimated turnover for your current financial year?

List your current contracts and obligations:

Description	Value ®	Start date	Duration	Expected completed date

Do you have the capacity to supply the goods and services described in this Tender, should the contract be awarded to you? YES / NO

Staffing Profile:

Provide information on the staff that you have available to execute this contract (attach a separate list if the space provided is insufficient)

Permanently employed staff : gender and race	Number of staff
Temporary staff to be employed for the project : gender and race	Number of staff

Name of Tendering Entity : _____

Signature : _____ **Date :** _____

FORM 2.1.6 SCHEDULE OF PROPOSED SUB-CONSULTANTS

The Tenderer shall, in accordance with the provisions of condition of Tender, list below the sub-consultants he/she proposes to employ for part(s) of the work.

If any or all of the sub-consultant/s listed hereunder are not approved subsequent to acceptance of the Tender, it shall in no way invalidate the Tender or the Contract, and the Tendered unit rates for the respective items of work shall remain final and binding even if a sub-consultant/s not listed below is approved by the Employer.

PART OR TYPE OF WORK	PROPOSED SUB-CONSULTANT	WORK RECENTLY EXECUTED BY SUB-CONSULTANT

FORM 2.1.7 FINANCIAL REFERENCES**FINANCIAL STATEMENTS**

I/We agree, if required, to furnish an audited copy of the latest set of financial statements together with my/our Directors' and Auditors' report for consideration by the Employer.

DETAILS OF TENDERING ENTITY'S BANK

I/We hereby authorize the Employer/Engineer to approach all or any of the following banks for the purposes of obtaining a financial reference:

DESCRIPTION OF BANK DETAIL	BANK DETAILS APPLICABLE TO TENDERER'S HEAD OFFICE
Name of bank	
Branch name	
Branch code	
Street address	
Postal address	
Name of manager	
Telephone number	()
Fax number	()
Account number	

GEORGE MUNICIPALITY

DEPARTMENT: COMMUNITY SERVICES

CONTRACT NUMBER COM 006/2016

**APPOINTMENT OF A CONTRACTOR FOR THE BUILDING OF PUBLIC
TOILETS AT VAN DER STEL SQUARE**

**Other Documents Required For Tender Evaluation
Purposes (Part T2.2)**

- | | |
|------------|-----------------------------------------------------------------------------------------------|
| Form 2.2.1 | Certificate of Tenderer's Attendance at the Compulsory Information Session / Site Meeting |
| Form 2.2.2 | Written Proof of Tenderers registration at the Construction Industry Development Board (CIDB) |

FORM 2.2.1 CERTIFICATE OF TENDERER'S ATTENDANCE AT THE COMPULSORY CLARIFICATION MEETING

This is to certify that I, ,
representative of (Tenderer)

.....
of (address)

.....
Telephone number

Fax number

attended Clarification Meeting on **Friday, 18 March 2016 at 11:00** in the company of

(George Municipality / Employer's Representative)

PLEASE NOTE:

Tenderers are requested to submit the minutes received at above-mentioned compulsory information session/meeting with their Tender documents. (Non-submission of this information may lead to rejection of this Tender)

TENDERER 'S REPRESENTATIVE:

GEORGE MUNICIPALITY / EMPLOYER'S REPRESENTATIVE:

**FORM 2.2.2 PROOF OF REGISTRATION AT THE CONSTRUCTION INDUSTRY
DEVELOPMENT BOARD (CIDB)**

The Tenderer is to affix to this page:

- Written proof of Tenderers registration at the CIDB

Returnable Schedules that will be incorporated into Contract

Part T2.2

GEORGE MUNICIPALITY

DEPARTMENT: COMMUNITY SERVICES

CONTRACT NUMBER COM 006/2016

**APPOINTMENT OF A CONTRACTOR FOR THE BUILDING OF PUBLIC
TOILETS AT VAN DER STEL SQUARE**

**Returnable Schedules that will be Incorporated in
the Contract (Part T2.2)**

Form 2.2.5

Record of Addenda to Tender Documents

FORM 2.2.5 RECORD OF ADDENDA TO TENDER DOCUMENTS

We confirm that the following communications received from the Employer before the submission of this Tender offer, amending the Tender documents, have been taken into account in this Tender offer:

	Date	Title or Details
1		
2		
3		
4		
5		
6		
7		
8		
9		
10		

Attach additional pages if more space is required.

Signed: Date:

Name: Position:

SIGNED ON BEHALF OF TENDERER:

1. Infrastructure and resources available

Evaluation of the following in terms of the size, nature and complexity of goods and/or services required:

- Physical facilities.
- Infrastructure and resources available for the contract owned by the Tenderer.
- Infrastructure and resources the Tenderer intends renting, should the contract be awarded to him.

2. Size of enterprise, and current workload

Evaluation of the Tenderer's position in terms of:

- Previous and expected current annual turnover
- Current contractual obligations
- Capacity to execute the contract

3. Staffing profile

Evaluation of the Tenderer's position in terms of:

- Staff available for this contract being Tendered for
- Qualifications and experience of key staff to be utilized on this contract.

4. Previous experience

Evaluation of the Tenderer's position in terms of his previous experience.

Emphasis will be placed on the following:

- Experience in the relevant technical field
- Experience of contracts of similar size
- Some or all of the references will be contacted to obtain their input.

5. Financial ability to execute the contract

Evaluation of the Tenderer's financial ability to execute the contract. Emphasis will be placed on the following:

- Professional indemnity
- Contact the Tenderer's bank manager to assess the Tenderer's financial ability to execute the contract and the Tenderer hereby grants his consent for this purpose.

If the Tender does **not** meet the requirements contained in the George Municipality Procurement Policy, and the mentioned framework, it will be rejected by the Council, and may not subsequently be made acceptable by correction or withdrawal of the non-conforming deviation or reservation.

6. Penalties

The George Municipality will if upon investigation it is found that a preference in terms of the Act and these regulations has been obtained on a fraudulent basis, or any specified goals are not attained in the performance of the contract, on discretion of the Departmental Head, one or more of the following penalties will be imposed:

- Cancel the contract and recover all losses or damages incurred or sustained from the Tenderer.

Returnable Schedules that will be incorporated into Contract

Part T2.2

- Impose a financial penalty of twice the theoretical financial preference associated with the claim, which was made in the Tender.
- Restrict the Tenderer, its shareholders and directors on obtaining any business from the George Municipality for a period of 5 years.

Compliance with Employment Equity Act 55 of 1998

Attach a valid certificate from the Department of Labour, or a declaration (Refer to Equity Ownership Table) by the designated EMPLOYER, that the EMPLOYER complies with the relevant chapters of the Employment Equity Act.

A failure to comply with the above is sufficient ground for rejection of any offer to conclude an agreement or for cancellation of the agreement.

Definitions in terms of the last mentioned Act.

“designated EMPLOYER means-

- a) a EMPLOYER who employs 50 or more employees;
- b) a EMPLOYER who employees fewer than 50 employees, but has a total annual turnover that is equal to or above the applicable annual turnover of a small business in terms of Schedule 4 to this Act.”

“Schedule 4”

TURNOVER THRESHOLD APPLICABLE TO DESIGNATED EMPLOYERS

Sector or sub sector in accordance with the Standard Industrial Classification	Total annual turnover
Agriculture	R 2,00 m
Mining and Quarrying	R 7,50 m
Manufacturing	R 10,00 m
Electricity, Gas and Water	R 10,00 m
Construction	R 5,00 m
Retail and Motor Trade and Repair Services	R 15,00 m
Wholesale Trade, Commercial Agents and Allied Services	R 25,00 m
Catering, Accommodation and other Trade	R 5,00 m
Transport, Storage and Communications	R 10,00 m
Finance and Business Services	R 10,00 m
Community, Social and Personal Services	R 5,00 m

GEORGE MUNICIPALITY

DEPARTMENT: COMMUNITY SERVICES

CONTRACT NUMBER COM 006/2016

**APPOINTMENT OF A CONTRACTOR FOR THE BUILDING OF PUBLIC
TOILETS AT VAN DER STEL SQUARE**

The Contract (Part C)

Part C1	Agreement and Contract Data
Part C2	Pricing Data
Part C3	Scope of Works

GEORGE MUNICIPALITY

DEPARTMENT: COMMUNITY SERVICES

CONTRACT NUMBER COM 006/2016

**APPOINTMENT OF A CONTRACTOR FOR THE BUILDING OF PUBLIC
TOILETS AT VAN DER STEL SQUARE**

Agreement And Contract Data (Part C1)

Part C1.1	Form of Offer and Acceptance
Part C1.2	Contract Data
Part C1.3	Objections and Complainants Form
Part C1.4	Form of Professional Indemnity Insurance

GEORGE MUNICIPALITY

DEPARTMENT: COMMUNITY SERVICES

CONTRACT NUMBER COM 006/2016

**APPOINTMENT OF A CONTRACTOR FOR THE BUILDING OF PUBLIC
TOILETS AT VAN DER STEL SQUARE**

Form of Offer and Acceptance (Part C1.1)

(AGREEMENT) OFFER

The Employer, identified in the Acceptance signature block, has solicited offers to enter into a contract for the procurement of:

.....

The Tenderer, identified in the Offer signature block below, has examined the documents listed in the Tender Data and addenda thereto as listed in the Tender schedules, and by submitting this Offer has accepted the Conditions of Tender.

By the representative of the Tenderer, deemed to be duly authorised, signing this apart of this Form of Offer and Acceptance, the Tenderer offers to perform all of the obligations and liabilities of the Service Provider under the Contract including compliance with all its terms and conditions according to their true intent and meaning for an amount to be determined in accordance with the Conditions of Contract identified in the Contract Data.

THE OFFERED TOTAL (INCLUDING VAT) IS:

.....**Refer to Part C3, Summary of Pricing Schedules**.....

.....rand (in words); R..... (in figures),

This Offer may be accepted by the Employer by signing the Acceptance part of this Form of Offer and Acceptance and returning one copy of this document to the Tenderer before the end of the period of validity stated in the Tender Data, whereupon the Tenderer becomes the party named as the Service Provider in the Conditions of Contract identified in the Contract Data.

Signature(s) _____

Name(s) _____

Capacity _____

(Name and address of organisation)

ACCEPTANCE

By signing this part of this Form of Offer and Acceptance, the Employer identified below accepts the Tenderer's Offer. In consideration thereof, the Employer shall pay the Service Provider the amount due in accordance with the, Conditions of Contract identified in the Contract Data. Acceptance of the Tenderer's Offer shall form an agreement, between the Employer and the Tenderer upon the terms and conditions contained in this Agreement and in the Contract that is the subject of this Agreement.

The terms of the contract are contained in

Part C1 Agreements and Contract Data
(which includes this Form of Offer and Acceptance)

Part C2 Pricing Data

Part C3 Scope of Work

and drawings and documents or parts thereof, which may be incorporated by reference into Parts C1 to C3 above.

The Tenderer shall within two weeks after receiving a completed copy of this Agreement, contact the Employer's representative (whose details are given in the Contract Data) to arrange the delivery of any bonds, guarantees, proof of insurance and any other documentation to be provided in terms of the, Conditions of Contract identified in the Contract Data. Failure to fulfil any of these obligations in accordance with those terms shall constitute a repudiation of this Agreement.

Notwithstanding anything contained herein, this Agreement comes into effect on the date when the Tenderer receives one fully completed original copy of this document, including the Schedule of Deviations (if any). Unless the Tenderer (now Contractor) within five working days of the date of such receipt notifies the Employer in writing of any reason why he cannot accept the contents of this Agreement, this Agreement shall constitute a binding contract between the parties.

Signature

Name **MR TREVOR BOTHA**

Capacity **MUNICIPAL MANAGER**

**GEORGE MUNICIPALITY
CIVIC CENTRE
YORK STREET
GEORGE**

It is expressly agreed that no other matter whether in writing, oral communication or implied during the period between the issue of the Tender documents and the receipt by the Tenderer of a completed signed copy of this Agreement shall have any meaning or effect in the contract between the parties arising from this Agreement.

FOR THE TENDERER:

Signature(s)

Name(s)

Capacity

(Name and address of organisation)

FOR THE EMPLOYER:

Signature

Name

Capacity

MR TREVOR BOTHA
MUNICIPAL MANAGER
GEORGE MUNICIPALITY
CIVIC CENTRE
YORK STREET
GEORGE

GEORGE MUNICIPALITY

DEPARTMENT: COMMUNITY SERVICES

CONTRACT NUMBER COM 006/2016

APPOINTMENT OF A CONTRACTOR FOR THE BUILDING OF PUBLIC
TOILETS AT VAN DER STEL SQUARE

Contract Data (Part C1.2)

CONDITIONS OF CONTRACT

The **Standard Professional Services Contract (Second Edition, September 2005)** published by the Construction Industry Development Board, are applicable to this.

Copies of these Conditions of Contract may be obtained from the Construction Industry Development Board's website www.cidb.org.za.

PART 1: DATA PROVIDED BY THE EMPLOYER

The following contract specific data are applicable to this Contract:

Clause 1	The Employer is the George Municipality.	
3.4 and 3.5	The Authorised and Designated representative of the Employer is:	
	Name: Mr. Wessel Robertson	
	The Employer's address for receipt of communications is:	
	Physical address: 82 Meade Street, George	Postal address: George Municipality, P O Box 19, George, 6530
	Telephone: (+2744) 802 2900 E-mail: robertson@george.org.za	
	The Project is for the Provision of Professional Engineering Services for Various Projects for a period of three years.	
3.6	The Service Provider may release public or media statements or publish material related to the Services or Project subject to the approval of the Employer.	
3.7	The Services Provision shall be completed for the portions as set out in the Scope of Works.	
5.1.1 and 5.1.2	The Service Provider is required to provide the Service with all reasonable care, diligence and skill in accordance with generally accepted professional techniques and standards. Where services include the powers to certify, decide or otherwise exercise discretion in regard to a contractor agreement between the Employer and others then the Service provider shall act in respect of that contract/agreement as an independent	
5.4.1	The Service Provider is required to provided the following insurances:	
	1. Insurance against	Risk in performing professional services (Professional Indemnity cover)
	Cover is:	Equivalent to the maximum of twice times the project value or R3 million for each and every claim
	Period of cover:	Duration of Project

Contract Data

Part C1.2

Clause 1	The Employer is the George Municipality.
	Deductibles are:
5.5	The Service Provider is required to obtain the Employer's prior approval in writing before taking any of the following actions: 1. Appointing Sub-Contractors for the performance of any part of the Services.
Additional Clause to be added 7.3	The Employer will not be responsible for any overtime worked by or overtime payments made to personnel, or any additional costs not specified in the tender submitted by the Tenderer.
9.1	Copyright of documents prepared for the Project shall be vested with George Municipality.
12.1	Settlement of disputes is to be in terms of Clause 49 and 50 of the Supply Chain Management Policy of the George Municipality. See Document C1.3.
14	Where not specifically indicated, all tendered prices, rates, tariffs, fees, etcetera are to include 14% VAT.

PART 2: DATA PROVIDED BY THE SERVICE PROVIDER

Clause		
5.1	The Service Provider is:	
5.3	The authorized and designated representative of the Service Provider is:	
	Name:	
	The Service Provider's address for receipt of communications is	
	Physical address:	Postal address:
	Telephone:	
	Fax:	
	E-mail:	

GEORGE MUNICIPALITY
DEPARTMENT: COMMUNITY SERVICES
CONTRACT NUMBER COM 006/2016

**APPOINTMENT OF A CONTRACTOR FOR THE BUILDING OF PUBLIC
TOILETS AT VAN DER STEL SQUARE**

Objections and Complainants Form (Part C1.3)

(Section 1.11.15 of the George Municipality's Supply Chain Management Policy)

(1) Details of Objector/Complainant

Name: _____

Address: (postal and street): _____

Tel: _____ Fax: _____

Contact person: _____

Reference number of Tender : _____

Other Party's Details (If any)

Name: _____

Address: (postal and street): _____

Tel: _____ Fax: _____

Contact person: _____

Reference number of Tender: _____

Description of Issue[s] in Dispute

List of Documents Attached

Determination Sought in Respect of Objection or Complaint

Form submitted by:

Name:

Signature:

Position:

Date:

Place:

GEORGE MUNICIPALITY

DEPARTMENT: COMMUNITY SERVICES

CONTRACT NUMBER COM 006/2016

**APPOINTMENT OF A CONTRACTOR FOR THE BUILDING OF PUBLIC
TOILETS AT VAN DER STEL SQUARE**

Form of Professional Indemnity Insurance (Part C1.4)

The Tenderer must affix proof of Professional Indemnity Insurance to the amount of twice the maximum project value or R3 million, whichever is the maximum amount, to this page.

GEORGE MUNICIPALITY

DEPARTMENT: COMMUNITY SERVICES

CONTRACT NUMBER COM 006/2016

**APPOINTMENT OF A CONTRACTOR FOR THE BUILDING OF PUBLIC
TOILETS AT VAN DER STEL SQUARE**

Pricing Data (Part C 2)

C2.1 Pricing Instructions

C2.2 Schedule of Activities

GEORGE MUNICIPALITY

DEPARTMENT: COMMUNITY SERVICES

CONTRACT NUMBER COM 006/2016

**APPOINTMENT OF A CONTRACTOR FOR THE BUILDING OF PUBLIC
TOILETS AT VAN DER STEL SQUARE**

Pricing Instructions (Part C2.1)

C2.1 PRICING INSTRUCTIONS

1. Include in the rates, prices, and the tendered total of the prices (if any) all duties, taxes (except Value Added Tax (VAT)), and other levies payable by the successful tenderer, such duties, taxes and levies being those applicable 14 days before the closing time stated in the tender data.
2. Show VAT payable by the employer separately as an addition to the tendered total of the prices.
3. Provide rates and prices that are fixed for the duration of the contract and not subject to adjustment except as provided for in the conditions of contract identified in the contract data.
4. State the rates and prices in Rand unless instructed otherwise in the tender data. The conditions of contract identified in the contract data may provide for part payment in other currencies.

GEORGE MUNICIPALITY

DEPARTMENT: COMMUNITY SERVICES

CONTRACT NUMBER COM 006/2016

**APPOINTMENT OF A CONTRACTOR FOR THE BUILDING OF PUBLIC
TOILETS AT VAN DER STEL SQUARE**

Schedule of Activities (C2.2)

C 2.2.1 FEE PROPOSAL GUIDELINES

Please take note of the following extracted guidelines and use this guideline to gauge your tender price for professional services offered. Guidelines are based on the latest Housing Subsidy Quantum of the Department of Local Government and Housing.

C 2.2.2 OFFERED FEES FOR VARIOUS PROJECTS

The following is a schedule that takes note of the prices that the Tenderer is offering to render professional services required on the various projects.

Please take note of the guidelines in order to provide Tenderer with a basis for prices offered.

Discount is restricted to a maximum of 10% of these fees.

Any discount in excess of 10% will invalidate the tender.

GEORGE MUNICIPALITY
DEPARTMENT: COMMUNITY SERVICES
CONTRACT NUMBER COM 006/2016

APPOINTMENT OF A CONTRACTOR FOR THE BUILDING OF PUBLIC
TOILETS AT VAN DER STEL SQUARE

Scope of Works (C3)

C 3.1 DESCRIPTIONS OF WORKS

1. Roof:

0.7mm Thick Brown & ITL
Kliplok roof sheets
Colour to match existing

2. Rafter Steelwork

80x40x2.5mm Hollow sections
Galv. Purlins on 76x50x2.5mm
Mildsteel Hollow section
Rafters to match existing
30x30x3mm Galv. Steel angles

3. Gutter & Rain Water Down Pipe

1.5mm Thick Galv. Box
Gutter to mach existing
Existing R.W.D.P (50x75)
To be removed and re-used on new addition.

4. Grating

Valmtex (Code –V.E.M.315F)
Galv. Steel grafting to match existing.

5. Cill

Face brick Cill at 45°
To match existing

6. Walls

230 Brick wall to be plastered and painted with face brick
Band and Plinth shown on elevations (to match existing).

7. Conc. Surface bed.

Approxed epoxy layer light grey in colour on 30mm grano screed
On 80mm (min 15mpa) conc. Surface bed on 250 micron USB

Green waterproof membrane sealed at laps with gunplas pressure Sensitive tape lay continuous under surface bed on 25mm thick river sand blinding layer on well compacted hard core filling.

8. Conc. Foundations

650x230 (min)
Strip foundations (To match existing)

9. Sanitary ware

6-Off "Betta" ceramic W.C's with flush master valves.
4-Off "Vall" urinals with flush master valves
7-Off "Betta" wash hand basins
Wall hung with extra steel brackets and with cold water pillar tap

NOTE!!

Plumber to make sure of pipe sizes to be correct that flush valves
To work efficiently.

10. Electrical Spec

Allow for suitable led light fittings (energy saving).
Provide steel pipe trunking
Allow for industrial pipe
Light switches

NOTE!!!

Contractor to familiarize him/herself and check existing steelwork
On existing building before any fabrication of new steelwork to be done. New drawings to be read in conjunction with Mun approved DRG'S of brink strokes Mkhize Architects.

GEORGE MUNICIPALITY

DEPARTMENT: COMMUNITY SERVICES

CONTRACT NUMBER COM 006/2016

APPOINTMENT OF A CONTRACTOR FOR THE BUILDING OF PUBLIC
TOILETS AT VAN DER STEL SQUARE

C 3.2 SUMMARY

ITEM NUMBER	DESCRIPTION	TYPE Labour-L Material-M	UNIT	QUANTITY	COST INCL 14% VAT
A.	Earth works, Excavations and Site work				
1.	Set out works and clear site	L	Square metre	74.36	R
2.	Labour to excavate foundation trenches	L	Cubic metre	23.34	R
3.	Labour to bulk Excavations in earth by hand	L	Cubic metre	5.49	R
4.	Labour for backfill to foundation walls	L	Square metre	10.34	R
5.	Labour to compact Imported filling material under surface bed	L	Cubic metre	9.16	R
6.	Imported Filling Material	M	Cubic metre	9.16	R
B.	Foundations and Surface Beds				
7.	4x Y12 High tenstile steel reinforcing bars plus Y10 stirrups in strip footings	M	metre	46.78	R
8.	Unreinforced concrete in strip footings. Pre-mix concrete 25 MPA	M	Cubic metre	7.66	R
9.	Reinforced (Mesh) concrete to surface beds incl. screed. Pre-mix concrete 15 MPA	M	Cubic metre	41.37	R
10.	Mesh reinforcing No.193 L:6000 w:2400	M	Cubic metre	41.37	R
11.	Labour to do foundation and Surface Beds	L	Square metre	41.37	R

Total of Earth works, Excavations, Site works, Foundations and Surface Beds					R
C	. Masonry and Cladding				
12.	Labour to lay bricks of underground foundation walls and Super Structure Walls to Roof height	L		3700 Face bricks	R
13.	Material for External Exposed (above ground) Foundation Walls Incl. building sand, Portland cement, Galvinised brickforce, Clay Stock Bricks, spirits of salt	M	Square metre	6.79	R
14.	Material for External Underground Foundation Walls Incl. Building sand, Portland cement, Galvinised brickforce, Clay Stock Bricks	M	Square metre	12.78	R
15.	Material for Internal Foundation Walls Incl. building sand, Portland cement, Galvinised brickforce, Clay Stock Bricks	M	Square metre	18.58	R
Total of Masonry and Cladding including all material and labour					R
D.	Doorframes, Slidings and Doors				
16.	Material for Door Frames, Doors, Slidings (813mm Doorframes and Doors)2x External and 7 x Internal Doors incl. Locksets and Door Stoppers	M	All	As per plan	R
17.	Labour for build-in door frames and hanging of all doors	L	All	As per plan	R
Total for Doorframes and Doors incl. all Material and Labour					R

E.	Roofing				
18.	Metal Sheeting with Concealed Fixing Brackets including: All fast Serrated nails- 4x65 mm, Brown Built CIS Globalcoat Klip-Lok 406 Roof Sheet per square metre:0.5 Galvinised Patented Clip for Klip-Lok 406 Roofing KL65	M	Square Metre	51.35	R
19.	Labour for Brown built Klip-lok Roof Sheeting (406 mm Cover)	L	Square Metre	51.35	R
Total for all Roofing incl. Material and Labour				R	
F.	Waterproofing				
20.	Waterproof Sheeting under Surface Beds: SABS USB Green Co-Ex Sheeting 250 um per square metre	M	Square metre	58	R
21.	Waterproof sheeting Jointtape 1:30000 w:48	M	1.10 roll	30 metre	R
22.	SABS DPC under walls 375 um 1:40000 w:225	M	0.70 roll	28 metre	R
23.	SABS DPC under walls 375 um 1:40000 w: 110	M	0.48 roll	19 metre	R
Total of SABS DPC under Walls 375 um				R	
G. Plaster and Screed					
24.	Material for cement screed (Portland cement and river sand) incl. internal steel float and external wood float cement plaster	M	Square metre	162	R
25.	Labour for cement screed (Portland cement and river sand) incl. internal steel float and external wood float cement plaster	M	Square metre	162	R

Total for plaster and Screed for internal and External walls including Material and Labour					R
H.	Plumbing and Sanitary Fittings				
26.	Urinals- Cobra Flush master dia:20 complete with all fittings	M	each	4	R
27.	Toilets- Betta Close Couple Pan and Cistern Astina White including all fittings	M	each	4	R
28.	Basins- Vaal pottery Wall mounted Hibiscus Basin including all fittings, ISCA C.P pillar Taps	M	each	7	R
29.	All underground sewerage pipes (Marley Normal Duty 110 mm) with all fittings and above ground pipes and fittings- use durable quality plastic pipes	M	As per plan	As per plan	R
30.	All underground water pipes (Polypropylene Pipe 15mm and 22mm) with all fittings and above ground pipes and fittings (Durable quality plastic fittings- above grounds to be use	M	As per plan	As per plan	R
31.	Provisional sum for fittings/ connection to municipal services	M	As per plan	As per plan	R
32.	Labour for all Plumbing and Sanitary ware including installation and fitting/ connections	L	As per plan	As per plan	R
Total of all Plumbing and Sanitary Ware including Material and Labour					R
I.	Paintworks				
33.	Apply PVA Paint to Internal and External Wall (1 filler and 2x Final) Plascon Paint Products to be use	M	Square metre	163	R
34.	Apply Enamel Paint to Internal Doors and Frames	M	Square metre	163	R

Special Conditions of Tender

Part C4

	(1x primer, 1x under and 1x Final coats) Plascon Paint Products to be use				
35.	Apply External Varnish to Doors and Door Frames (3x coats) Plascon Varnish Products	M	Square metre	163	R
36.	Labour for all Paint and Varnish Works	L	Square metre	194	R
Total for all Paint and Varnish works incl. Material and Labour				R	
J.	Metal works, Gates and Wrought Iron				
37.	Total for Metal Work, Gates, Burglar bars - using prescribed Iron	M + L	As per plan	As per plan	R
Total for all Metal works, Gates and Wrought Iron incl. Material and Labour					R
K. Provisional Amount for 1.5 mm Gutter Box 7.605 M long				As per plan	R 10 000.00
L . Provisional Amount for cleaning, painting and securing of existing building internally and xternally				As per plan	R 5 000.00
M. Provisional Amount for all Electrical Work including Material , Labour and connection to Municipal Service				As per plan	R 10 000.00
Total Cost for Project (Excluding 14% Included)				R	
14% VAT				R	
Total Cost for Project (Vat Included)				R	

GEORGE MUNICIPALITY

DEPARTMENT: COMMUNITY SERVICES

CONTRACT NUMBER COM 006/2016

APPOINTMENT OF A CONTRACTOR FOR THE BUILDING OF PUBLIC
TOILETS AT VAN DER STEL SQUARE**Special Conditions of Tender According to the
George Municipal PPPFA Policy (Part C4)**

1. It will be required from all successful bidders to register on the Western Cape Supplier Database (WCSD).

SPECIAL CONDITIONS OF TENDER		
	Comply Y/N	Ref in proposal
CONDITIONS APPLICABLE TO THE PROMOTION OF MUNICIPAL LOCAL AND SOCIO-ECONOMIC DEVELOPMENT		
The full portion budgeted for unskilled labour will be executed by 100% local unemployed labourers who are beneficiaries of this project (residing within the area of the greater George Municipal including Uniondale). Preference must be given to unemployed youth and indigent people. The service provider must provide evidence of the identity and addresses of these labourers within 14 days after award of the contract. Minimum prescribed wages must be paid. In the event that this condition cannot be adhered to the service provider must obtain prior approval from the Municipality.		
All materials procured for this project MUST be sourced from local suppliers in George. In the event that this condition cannot be adhered to the contractor must obtain prior approval from the Municipality.		
The service provider must make use of a local subcontractor		
B. CONDITIONS APPLICABLE AFTER CLOSING OF TENDER BUT BEFORE A SELECTED SERVICE PROVIDER IS ANNOUNCED		
Any additional information upon request must be submitted in writing within 48 hours of receipt.		
C. CONDITIONS APPLICABLE AFTER AWARDING OF THE TENDER		
The service provider must provide the Municipality with a completed list of local labourers to be used, within 14 days after final award of the tender for approval by the Municipality. The aforesaid list must be updated and submitted together with the service providers progress report and invoice, inclusive of the following details: <ol style="list-style-type: none"> Salary / wages spent on local employees versus total wages / salary budget at site Number of local employees employed versus per total workforce at site Payments made to the local labourers CSI contributions and achievements and/or progress Any amendments prior approval from the Municipality. The service provider must provide local labourers and municipal staff with basic on-the-job training and provide them with a reference letter after completion of their services.		
The service provider must provide the Municipality with a schedule of all materials purchased with an indication of materials purchased from local suppliers as well as the ratio material spent between local and other suppliers. This schedule must be updated and submitted together with the service provider's progress report and invoice.		
The service provider must provide the Municipality with a certificate confirming payments made to the local labourers. This certificate must be updated and submitted together with the service providers' progress report and invoice.		
Payments will be made as per agreed progress schedule and a 5 % retention will apply - where 50% will be paid after 3		

Special Conditions of Tender**Part C4**

SPECIAL CONDITIONS OF TENDER		
	Comply Y/N	Ref in proposal
months of project closure and the rest of the 50% after conclusion of the warranty period, i.e. 12 months. Invoices must be submitted before 12 noon on Wednesdays at George Creditors office, to ensure timeous payment		
CSI Contribution for this project is voluntary		

GEORGE MUNICIPALITY

DEPARTMENT: COMMUNITY SERVICES

CONTRACT NUMBER COM 006/2016

APPOINTMENT OF A CONTRACTOR FOR THE BUILDING OF PUBLIC
TOILETS AT VAN DER STEL SQUARE

Site Information (Part C5)



GEORGE MUNICIPALITY

DEPARTMENT: COMMUNITY SERVICES

CONTRACT NUMBER COM 006/2016

**APPOINTMENT OF A CONTRACTOR FOR THE BUILDING OF PUBLIC
TOILETS AT VAN DER STEL SQUARE**

Health and Safety Specification (Part C6)

ATTACHED AS ANNEXURE A

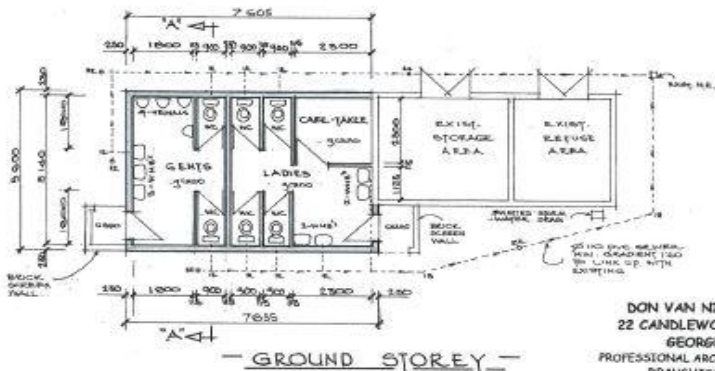
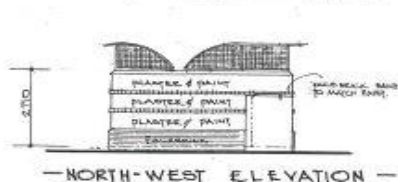
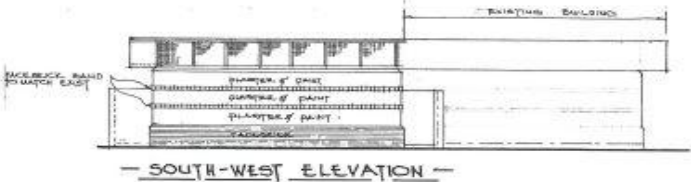
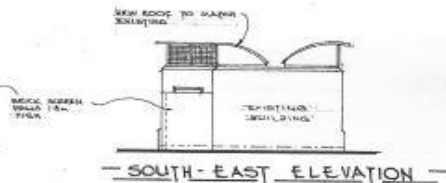
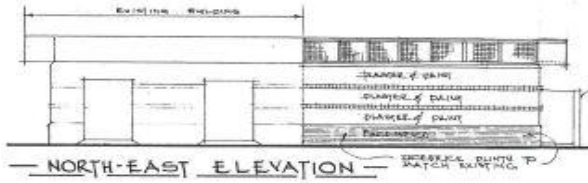
GEORGE MUNICIPALITY

DEPARTMENT: COMMUNITY SERVICES

CONTRACT NUMBER COM 006/2016

APPOINTMENT OF A CONTRACTOR FOR THE BUILDING OF PUBLIC TOILETS AT VAN DER STEL SQUARE

Drawings (Part C7)



NOTE!
 THESE DRAWINGS ARE FOR ROAD
 INSPECTION ONLY WITH
 APPROVED DRAWINGS OF
 BRICKWORK AND ARCHITECTURE

GEORGE MUNICIPALITY
APPROVED
 20/10/15 PLAN NO. 1437/15
 John Examiner

DON VAN NIEKERK
 22 CANDLEWOOD ST.
 GEORGE
 PROFESSIONAL ARCHITECTURAL
 DRAUGHTSMAN
 REGISTRATION No Dc391
 CELL No 083 795 1261

GEORGE MUNICIPALITY
VAN DER STEL SQUARE
PUBLIC TOILET FACILITIES
WORKING DRAWINGS
 SCALE: 1:100 DATE: OCT. 2015